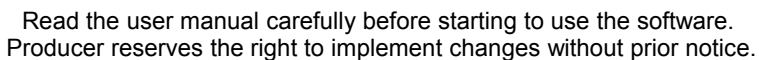


- Version: **3.0.0** or higher



CONTENTS

1. GENERAL CHARACTERISTICS.....	3
2. INSTALLATION STEP BY STEP.....	3
3. USING OF "SIMCORDER SOFT" PROGRAM.....	10
3.1. APPLICATION STARTUP.....	12
3.1.1. Licence Information.....	12
3.1.2. Main program interface.....	13
3.2. "CURRENT MEASUREMENT" MENU.....	15
3.2.1. "Table" tab.....	15
3.2.2. "Graph" tab.....	17
3.2.3. "semiSCADA" tab.....	21
3.2.4. "Device Info" tab.....	22
3.3. "REPORTS" MENU.....	23
3.3.1. "Table" tab.....	23
3.3.2. "Graph" tab.....	25
3.4. "CONFIGURATION" MENU.....	26
3.4.1. "Devices" tab.....	26
3.4.2. "Groups" tab.....	31
3.4.3. "Alarms" tab.....	31
3.4.4. "Settings" tab.....	32
3.5. GROUP OPERATIONS.....	33
3.6. SIGNALISATION OF SYSTEM ALARM STATES.....	34
3.6.1. Defining of alarm states.....	34
3.6.2. Defining of relations between device messages and alarm states.....	36
3.6.3. Defining of relations between alarm states and alarm devices.....	37
3.6.4. Example configuration of alarm states signalisations.....	38
3.7. "SEMISCADA" MODULE.....	40
3.7.1. Description of semiSCADA interface.....	40
3.7.2. Opening a configuration.....	42
3.7.3. Creating a new configuration.....	42
3.7.4. Indicators.....	44
3.7.5. Shapes and descriptions.....	52
3.7.6. Examples of configuration.....	53
3.8. ALARM NOTIFICATIONS.....	57
3.8.1. GSM notification.....	57
3.8.2. E-Mail notification.....	58
3.9. APPLICATION CLOSING.....	59
3.10. LIST OF ERRORS AND FAULT DIAGNOSTICS.....	60

Explanation of symbols used in the manual:



- This symbol denotes especially important characteristics of the software working.
Read any information regarding this symbol carefully

1. GENERAL CHARACTERISTICS

The **SimCorder Soft** program enables the visualization, archiving and printing of measurements (e.g. temperature, humidity, pressure). Work with network of units takes place through an RS485 serial interface. Connecting a network of units to a serial port (RS 232) or USB port of a PC is possible thanks to a converter (RS 485 to RS 232 or RS 485 to USB).

2. INSTALLATION STEP BY STEP

1. Install **SimCorder Soft** from included CD. **SimCorder Soft** is designed to Windows operating system (Windows 98 or newer).



Install **BASIC**, **ALARM** or **SERVER** version of **SimCorder Soft** on the PC directly connected to network of units. The **TERMINAL** version of **SimCorder Soft** allows visualization (via internet) of devices working controlled directly by **SERVER** version of **SimCorder Soft**. The **SERVER** and **TERMINAL** version are included in one package named **SimCorder Soft NETWORK**.

The **SimCorderSoft-v(NR)-install** file is designed to install the **SimCorder Soft** program (**NR** is a version number). The install file is located in folder on CD delivered with device.

During installation follow the directions provided by **Installation wizard**. The wizard will create a folder on the computer's hard drive, the program files will be placed in this folder. The short cut to the program will be placed in a location specified by the user. During installation, you may receive a system message instructs you, that installed driver is unsigned (Figure 2.1). This message applies to the driver of USB License Dongle required to run the application with full capabilities. You should agree to the installation by clicking on **[Continue Anyway]** or **[Install this driver software anyway]** depending on your version of Windows. After connecting the USB License Dongle into a computer, system will be able to automatically detect and install the appropriate drivers.

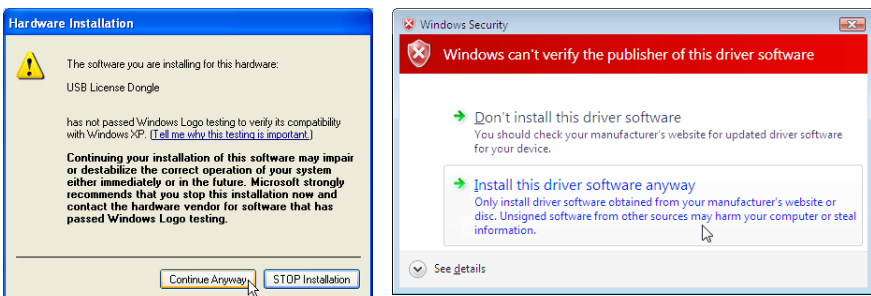


Figure 2.1. Message asking you to install USB License Dongle driver on Windows XP (on the left) and Windows Vista / 7 (on the right)

Manual start-up of the program is done using the **SimCorder.exe** executable file.

- Initial start-up of the application enables detection of all devices present in the network (excluding **TERMINAL** version). The user is asked to perform installation and configuration procedure for all detected devices.

Follow the guidelines in the windows displayed by the program. To continue installation procedure, once initial screen is displayed, click on the **[Next>>]** button.

- Next screen (Figure 2.2) enables the selection of the number for the RS 232 serial port for the converter. The number of the selected port must comply with number of the port to which the converter is connected. If devices have work with different baud rate than default value (9600 bit/s) then user can specify desired value using this parameter.

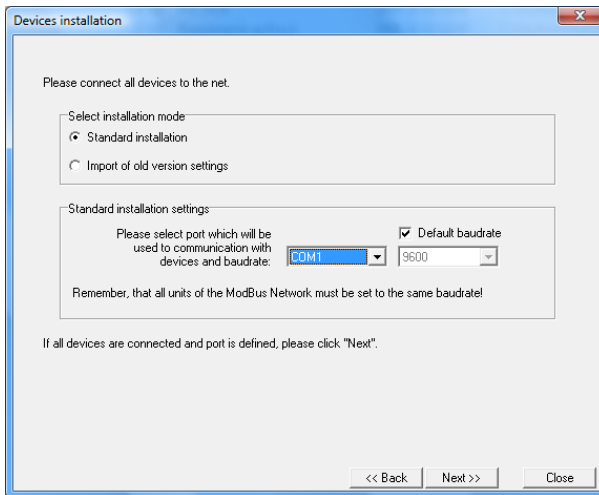


Figure 2.2. Selection of serial port

- After defining the communications port and baud rate, go to device detection screen (Figure 2.3) by clicking on the **[Next>>]** button.

SimCorder Soft applies two methods of network installation. Basic method – **Automatic device detection** – it is method created especially for networks of devices not equipped with displays and keyboards (like some modules in DIN mounting housings, and TRS system modules).

Second method – **Network Scanning**. It is quick method designed for networks assembled of modules equipped with some method of configuration (e.g. has own display and keyboard), and were initially configured by set of individual addresses. This method is recommended for networks assembled of typical devices, and in case of reinstallation of already preconfigured network.

While first run of a software, it comes directly to automatic detection of devices. Only one device can be set to address FFh (255) at this moment. Address FFh of the device is an “information” for software, that this device requires readdressing. If any device has address FFh, then software will detect it, change address of this device and finally adds it to network configuration stored on PC. **SimCorder Soft** is responsible of installation and readdressing what preserves that addresses of successive devices are unique.



- Every device has its own type identifier allowing identification of the device type and get proper informations about detected device (about number of measurement channels, configuration registers etc.) from database of types. In a case when some type of the device is not registered in a database, software displays message “**Unknown device**”, in a list of devices.
- In case when network (devices) has been configured beforehand (not for first installation) user can use “network scanning” function - **[Scan network]**. Such situation can take place only if network (devices) has been configured beforehand (see **Network scanning**),
- Function **[Reset the addresses]** causes of setting manufacturer addresses in all TRS type devices (modules) connected to the network, and can be used only in critical situations while network installation. **Remember** that this operation must be followed by re installation of all devices in the system (opening of every cover, and handmade enabling of detection mode).

Automatic device detection

In this mode software searches for a devices with address FFh (and connected to the analysed network). When software detects such device, it identifies its type, readdresses it (starting from address 1) and adds to the list of devices.

In case of device with ability of manual addressing, it is required to set address of this devices to value FFh, and wait until software detects it and adds it to the list of devices. Note, that similar effect can be obtained by setting of its address to 00h. After device is detected and added to the list, address of next device can be set to FFh (or 00h). Note, that only one device can be set to address FFh (00h) at the same time. In other case none of devices will be detected, or their RS-485 interfaces (and also USB/RS-485 converter) can be damaged in the worst case.

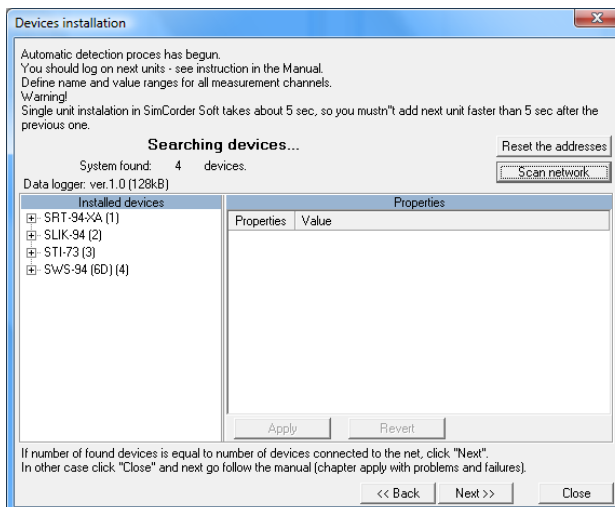


Figure 2.3. Automatic device detection mode

The TRS modules are not equipped with keyboard, but have installed special key

allowing resetting them to default settings – address FFh and baud rate 9600b/s. Brand new devices has address FEh (254) that prevents system against accidental installation of new devices.

To allow automatic detection of the TRS type module:

- Enable installation mode - press and hold at least 5 sec. internal push-button
- release push-button after LED starts to lights continuously
- in about 1 sec. after that **SimCorder Soft** should detect and readdress device, so LED shall fade, and next flash every 10sec. These symptoms indicates that device is detected, and correctly installed in the system.

The list shown on the figure (Figure 2.3)) contains all detected devices. Date and time of installation allows identification of the devices (can be useful while settings of devices' names). In addition this screen informs that Data logger has been detected. Such informations can be confirmation of correct port selection.

Network scanning

This method is designed for networks composed of preconfigured devices (e.g. networks which was used with earlier version of software) or composed of devices with possibility to manual configuration of their addresses. Proper configuration of Modbus protocol parameters (Modbus RTU, 9600 bit/s, 8N1) and individual Modbus addresses for all devices have fundamental meaning for success in application of this method. It is recommended that devices have addresses in a range 01h ÷ 80h (1 ÷ 128). Addresses FEh (254), FFh (255) and 00h (0) are reserves for use of second method and should not be used. The way of address setting of particular devices depends on type of the device, and is usually described in details in their manuals.

User should pay special attention not to repeat addresses. In case when two or more devices has the same address, none of them will be detected, or their RS-485 interfaces (and also USB/RS-485 converter) can be damaged in the worst case.

After initial configuration of all the devices connected to the network, button **[Scan network]** (Figure 2.3) should be pressed on the PC screen to run network scanning. Software will scan the network, detect connected (and properly preconfigured) devices and create list of devices.

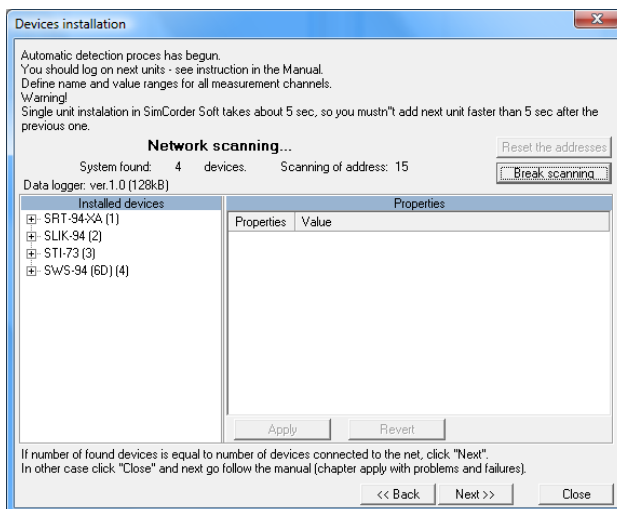


Figure 2.4. Device detection using Network scanning mode

In a case when **SimCorder Soft** has to be used with mixed network (some devices has their keyboards and displays and some not) it is recommended to configure devices which allow it, run **Network scanning**, and finally use **Automatic device detection** (for devices which have no possibility to be configured manually).

5. Device detection screen allows the assigning of names to detected devices (Figure 2.5). Order of devices on the list corresponds to the order of it's detection by software.

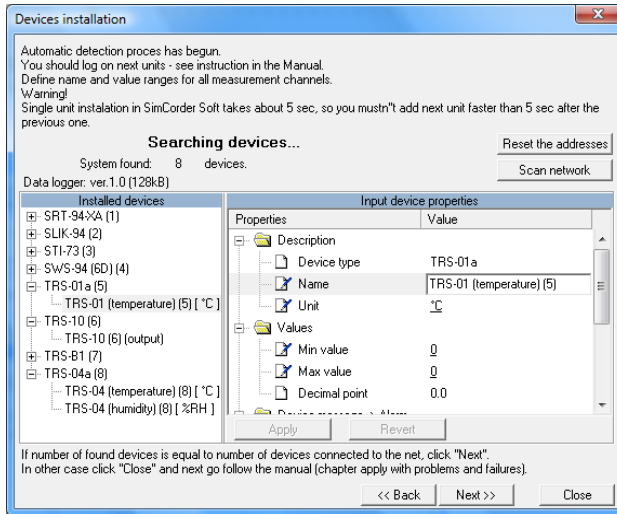


Figure 2.5. Assigning names, units and min/max values

Appropriate names (e.g. the location where the sensor was installed, Figure 2.6), unit denotation and allowable measured values (minimum and maximum) should be assigned to all detected devices. If any of these values will be exceeded during system operation an alarm message will be displayed.

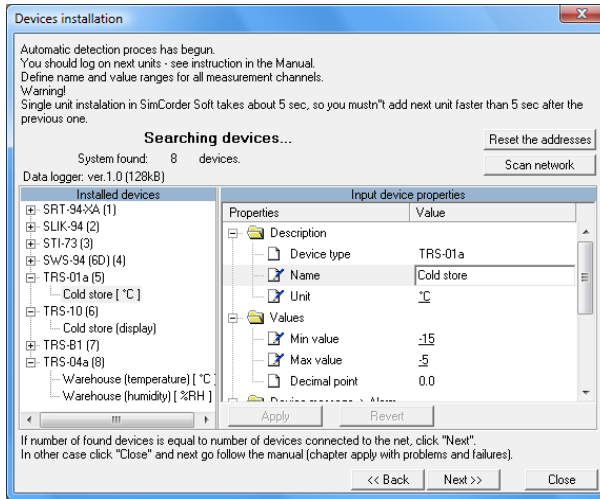


Figure 2.6. Assigning names, units and min/max values - an example of the settings

After pressing the [**Next>>**] button the final installation screen will be displayed.

- After pressing the [**Close**] button when the final installation screen is displayed, the installation shall be completed and the program will be ready to work.

3. USING OF “SIMCORDER SOFT” PROGRAM

Following versions of **SimCorder Soft** are available:

	BASIC	ALARM	NETWORK	
			SERVER	TERMINAL
Requirement of USB License Dongle	YES	YES	YES	NO
<i>semiSCADA</i> (graphic visualization of measurements)	YES ¹⁾	YES ¹⁾	YES ¹⁾	NO
Measurement on demand	YES	YES	YES	NO
Direct operation with data logger device	YES	YES	YES	NO
Reconfiguration of the devices	YES	YES	YES	NO ²⁾
Information about alarms states of the system	YES	YES	YES	YES
Transmission of alarms to external devices	NO	YES	YES	NO
GSM notification	NO	YES	YES	NO
E-Mail notification	NO	YES ¹⁾	YES ¹⁾	NO
Remote operation with network of units	NO	NO	YES ³⁾	YES ³⁾

- 1) - availability of the function depends on purchased license contained in USB License Dongle
- 2) - **TERMINAL** version allows exclusively visualisation of the settings, change of the settings can be made only via **SERVER** version installed on the PC directly connected to network of devices.
- 3) - **SERVER** version makes available data base containing measurement results, while **TERMINAL** version allows remote access to this data base.



Install **BASIC**, **ALARM** or **SERVER** version of **SimCorder Soft** on the PC directly connected to network of units. **TERMINAL** version of **SimCorder Soft** allows visualization (via internet) of devices working controlled directly by **SERVER** version of **SimCorder Soft**.

For running the **TERMINAL** version of this software it is necessary to enter server name where data base is available (Figure 3.1).

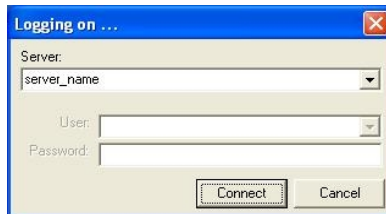


Figure 3.1. Logging to the server (**TERMINAL** version)



“**Server**” means name (or IP address) of the PC machine which **SERVER** version of **SimCorder Soft** program is running on.

TCP port 81 is used as default port for communication between **SimCorder SERVER** and **SimCorder TERMINAL**. If **SimCorder SERVER** is installed on the PC connected to LAN and there is a need of connecting with PC of other LAN, network administrator must configure access to LAN from WAN. To change default TCP port used by **SimCorder SERVER** use **Settings** tab and set parameter “**Local port**” of “**TCP Server**” (Figure 3.2).

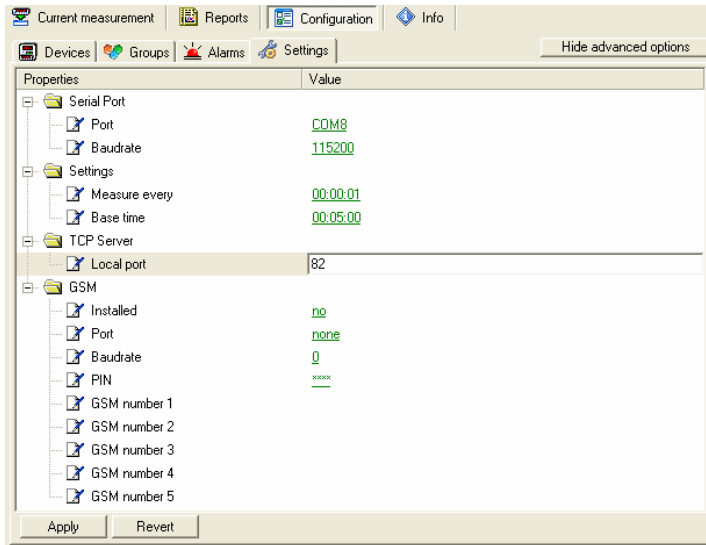


Figure 3.2. Settings of TCP port of **SimCorder SERVER**

While communication to **SimCorder SERVER** by **SimCorder TERMINAL**, proper TCP port must be set. It can be done by adding semicolon “:” and number of port follow the name of server (see Figure 3.3).

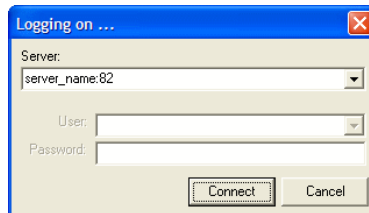


Figure 3.3. Change of TCP port settings in **TERMINAL** version, while communication with **SERVER** with non standard TCP port number

3.1. APPLICATION STARTUP

3.1.1. Licence Information

After startup **SimCorder Soft**. and connecting the USB License Dongle correctly, you can check functionalities included in the purchased licence on the **Info** tab (Figure 3.4).

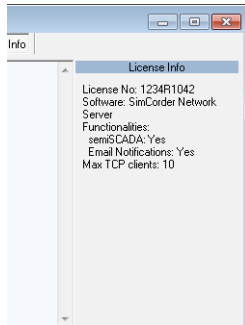


Figure 3.4. Licence information contained on the USB key



USB License Dongle have to be connected immediately (without extension cord) to USB port of the PC.

If the software not detected USB License Dongle or it has wrong licence, the program goes into reduced functionality mode named “REPORTS ONLY MODE”. In this mode, the software has stopped reading, recording of the measurements and alarm signalling. User can generate reports from previously recorded data only (Figure 3.5).

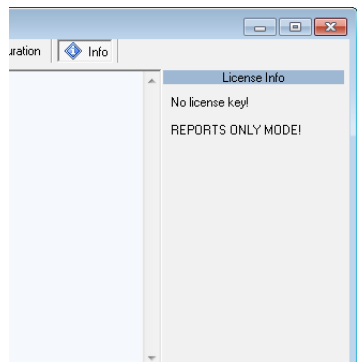
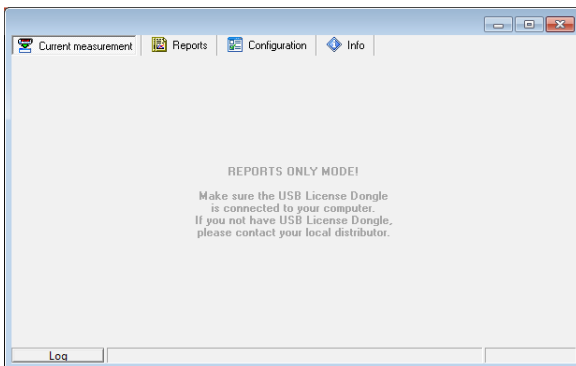


Figure 3.5. Reduced functionality mode

3.1.2. Main program interface

After application start-up **Current measurement** menu is displayed and **Table** tab is active (Figure 3.6).

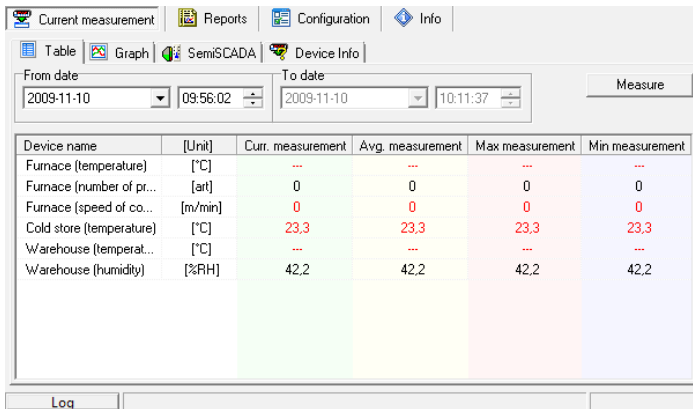


Figure 3.6. Program window upon startup

The selection from the currently active menu is made using the flat buttons in the upper part of the program window (Figure 3.6). Four positions are available:

- **Current measurement** - menu for current measurements visualizing;
- **Reports** - menu for visualizing and printing reports;
- **Configuration** - menu for changing system settings, defining groups of devices and alarm states of the system;
- **Info** - menu containing program information.

Button [**Log**] located in bottom part of the main window allows opening/closing additional window with messages related to the program execution. These messages window is opened automatically when new message appears.

Network of devices containing TRS type modules can work in two basic configurations (versions):

- with data logger (allows to preserve data measurement , even if PC host is turned off)
- without data logger (no measurements while PC host/ **SimCorder Soft** application is closed)

After running application checks, if data logger is available in present configuration (excluding **TERMINAL** version). If it is, then proper information will appear in menu **Configuration**, tab **Devices** (see Figure 3.7). Status bar placed in the bottom of the window informs about the state of data logger. Reports related to the data logger state appear on this status bar.

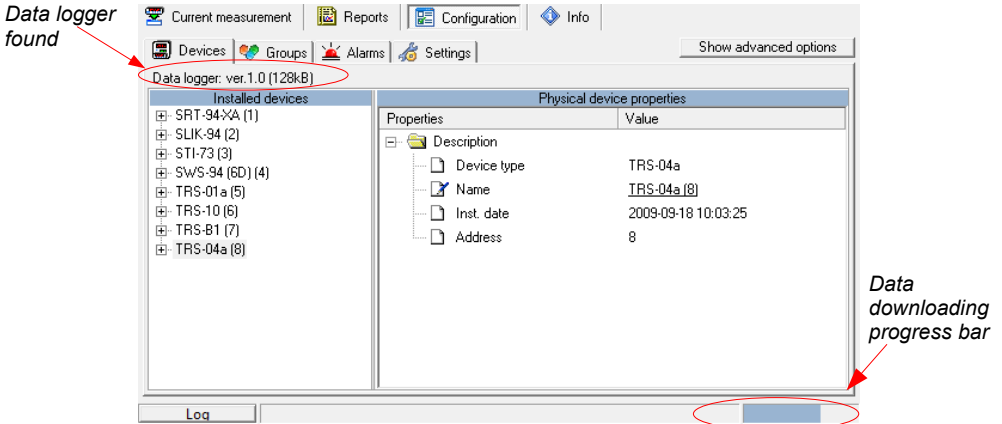


Figure 3.7. Identification of data logger

Sequence of operations with data logger

- reading of data stored while host computer were powered off, or **SimCorder Soft** application were closed.
- Storing of data to data base
- configuration of data logger

Until above operations are not finished, it is impossible to close the application (see chapter **APPLICATION CLOSING** , page 59).



- All operations related to data logger, are realised directly after application run, and do not any flow to it's other functions.
- **TERMINAL** version of **SimCorder Soft** can not cooperate with data logger directly.

3.2. “CURRENT MEASUREMENT” MENU

View mode allows to view current measurements results in table or graph format and informs about critical situations and errors occurring in the system.

Current measurement menu allows to view:

- current measurements results in table format (**Table** tab),
- current measurements results in graph format (**Graph** tab),
- current measurements results in semiSCADA visualisation format (**semiSCADA** tab),
- critical situations, and errors in table format (Device Info).

3.2.1. “Table” tab

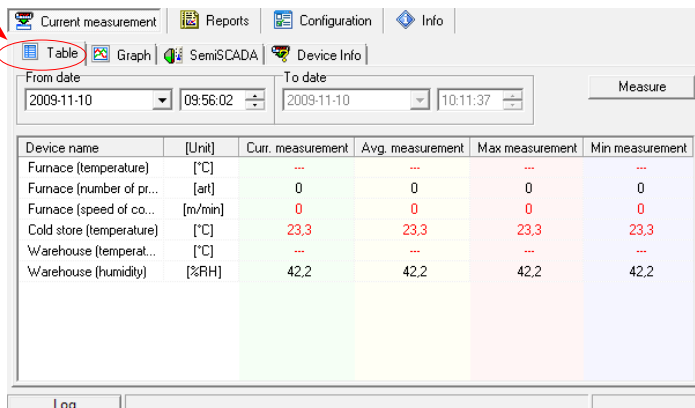


Figure 3.8. Current measurement - Table tab

Table tab (Figure 3.8) is used for viewing of current measurement results (temperature, humidity) in the form of a table, in all locations of the factory where sensors are installed (e.g. refrigerator plants, drying room).

The remaining elements of the **Table** tab are:

- **From date** - this is the date and time defining the beginning of analysed measurement recording period for printing in the form of a table,
- **To date** - this is the date and time defining the end of analysed measurement recording period for printing in the form of a table,
- **table window** consists of remaining columns:
 - **Device name** - name of device, created by user while installation of the system (i.e. freezing chamber no. 1)
 - **Unit** - unit for measurements
 - **Current measurement** - result of presently realised measurement

- **Average measurement** - average value of the measurements made between start and end dates.
 - **Maximum measurement** - the highest result of the measurements made between start and end dates.
 - **Minimum measurement** - the lowest result of the measurements made between start and end dates.
- **[Measure] button** - allows to make of new measurement, update the displayed data and store the result to database.

Change of “From date”

- 1) In order to change “From date”, click onto the arrow on right side of the date (Figure 3.9). The calendar window will open:

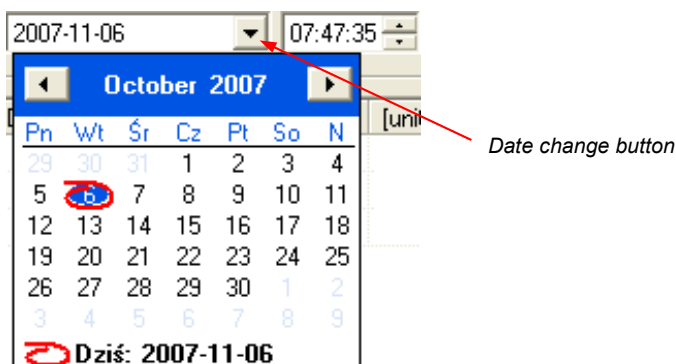


Figure 3.9. Changing the “From date”

- 2) The date can be change by clicking onto any day in the calendar. Buttons at the top part of the calendar are used to change months (Figure 3.10). After clicking on the current year located to the right from month's name an edition window and buttons for changing the year are displayed (Figure 3.10).

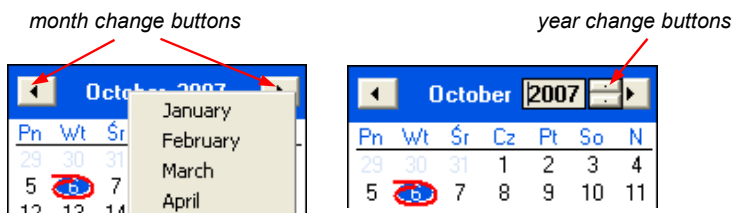


Figure 3.10. Changing months and year

- 3) The time can be changed by clicking on the box, in which it is displayed and manually typing it in using the keyboard.
- 4) The operation is completed by pressing the [**Refresh**] button; this will update the data shown in the table.

3.2.2. "Graph" tab

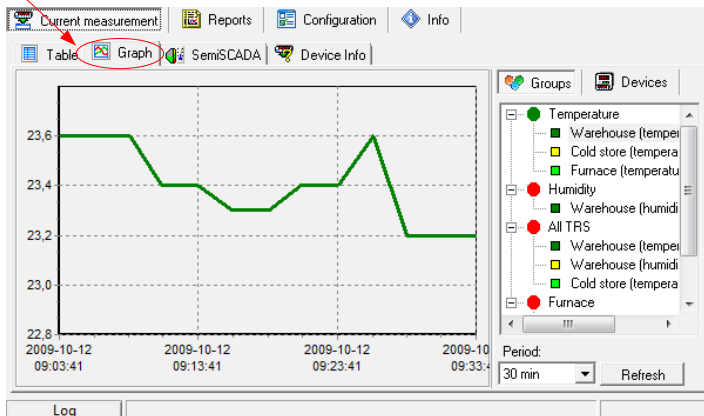


Figure 3.11. Current measurement - Graph tab

Graph tab (Figure 3.11) is used for viewing the measurement results (temperature, humidity) in the form of a graph. Measurements from a maximum of 12 units (transducers, sensors) may be viewed simultaneously.

The **Graph** tab contains such elements as:

- **graphs area** - plots measured values (e.g. temperature, humidity) in function of time. Each sensor is distinguished by a different colour (Figure 3.11);
- **Period** - this field allows selection of time period of the plots
- **[Refresh] button** - updates the displayed data;
- **Groups/Devices** - this box enables creating graphs in two modes:
 - for a group - collective graph for a maximum of 12 logical devices
 - for a single logical device.



Creating groups is described in the **GROUP OPERATIONS** section (3.5, page 33).

Selecting graph (graph for a group device / graph for single device)

In order to select graph type:

- click appropriate tab **Groups** or **Devices** (Figure 3.12),
- check specific group or device. This will display measurement results for the selected group or single device (displaying results takes place automatically after each change of group or device).



In order to use table for groups the group must be created first. Creating groups is described in the section 3.5 (**GROUP OPERATIONS**, page 33).

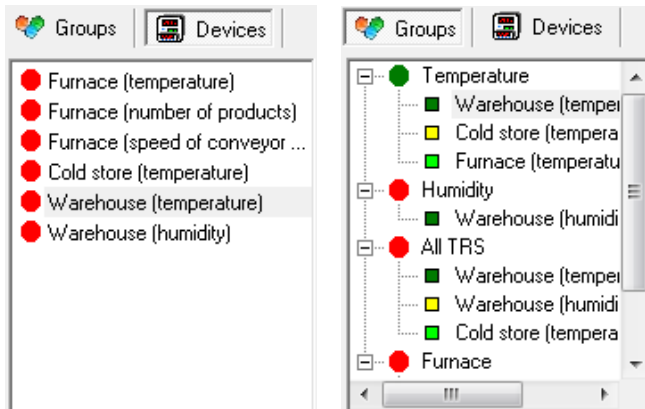


Figure 3.12. Single devices and Group of devices selection tabs.

Changing the graph display method

Following operations are available for the **graph area**:

- **enlarge graph** - a graph can be enlarged by marking the area of interest with the mouse pointer. In order to do this first left-click on the graph and, while holding down the left mouse button, drag the pointer to the bottom right corner of the graph. The rectangle marked this way will be enlarged. (Figure 3.13). To restore main scale of the graph, press left mouse button and move cursor to the left top corner of the graph or use **[Refresh]** push-button.

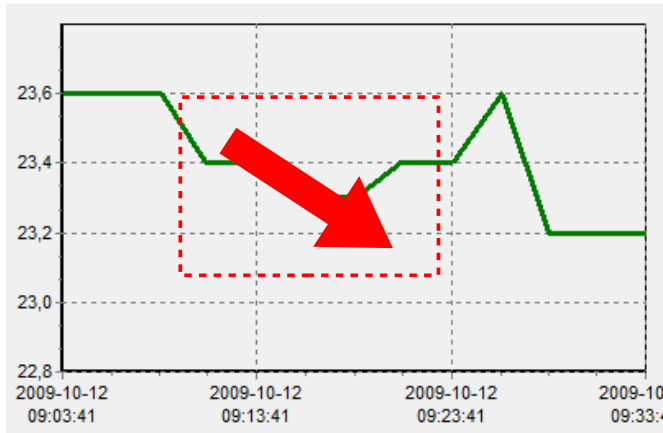


Figure 3.13. Enlarging graph

- moving the graph** - the graph can be moved to the left/right (earlier/later time period, correspondingly) or to the down/up (lower/higher measurements range, correspondingly) . In order to do this, right-click on the graph and drag the pointer in desired direction (Figure 3.14).

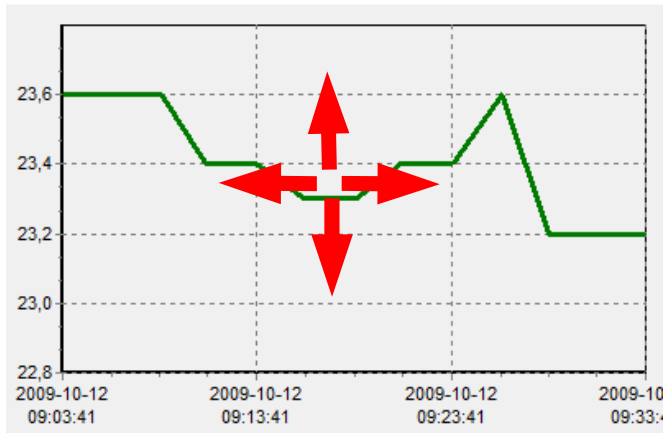


Figure 3.14. Moving the graph

- restoring default values** - the **[Refresh]** button enables returning to initial graph in 1:1 scale;

- **update the displayed measurements** - the **[Refresh]** button allows to update measurement data displayed on the graph.

Selection of the Graph Period

To change time period of the graph, select desired value in **"Period"** option using cursor.

Information on periodical lack of measurement

If any measurement device, for whatever reasons (e.g. sensor fault), will not returns measurement values, then this situation will be presented on the graph as **interruption** in the measurement (Figure 3.15).

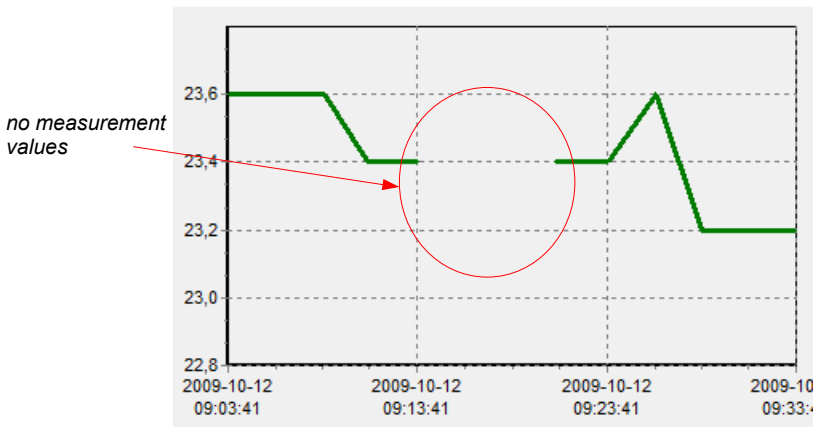


Figure 3.15. Interruption in the graph (e.g. sensor fault)

If measurements can not be executed for some time (e.g. power supply fault or if network is not equipped with data logger and application is closed) then the program will show this situation on the graph in the form of two vertical lines (Figure 3.16).

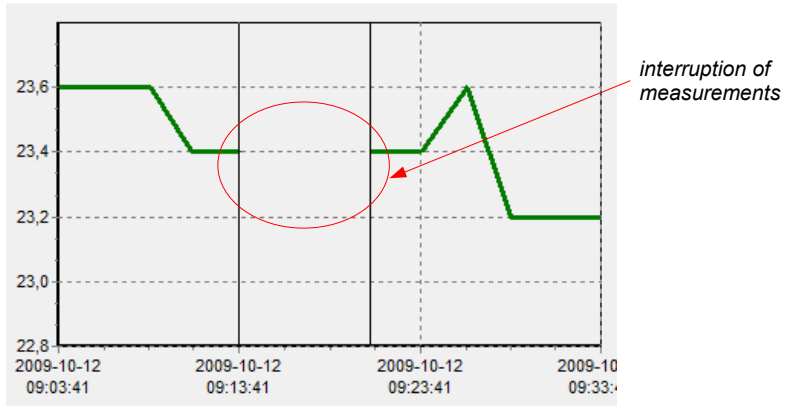


Figure 3.16. Vertical lines on the graph - interruption of measurements

3.2.3. “semiSCADA” tab

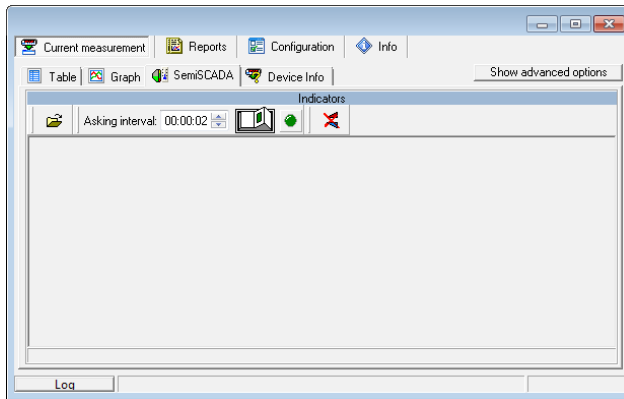


Figure 3.17. Current measurement - semiSCADA tab

semiSCADA tab (Figure 3.17) includes a visualization module named **semiSCADA**, which enables you to present current measurements in a clear graphical way.



- A detailed description and how to use the **semiSCADA** module is described in chapter 3.7.
- Availability of **semiSCADA** module depends on licence contained in an USB License Dongle.

3.2.4. “Device Info” tab

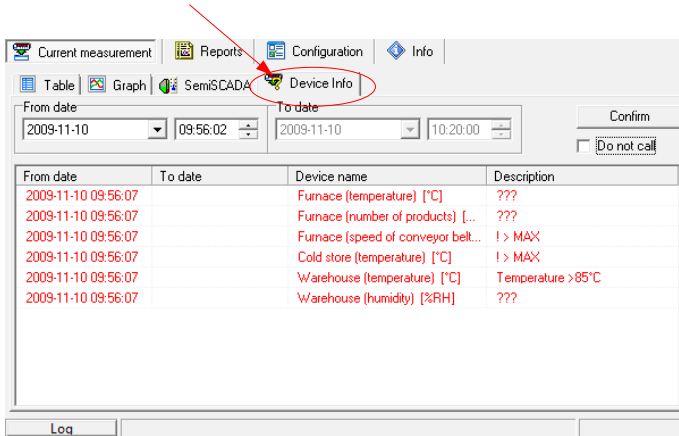


Figure 3.18. **Current measure - Device Info tab**

Device Info tab (Figure 3.18) is used for viewing of critical situations and devices errors reported in the system. The remaining elements of the **Device Info** tab are available:

- **From date**,
- **To date**,
- **table window** consisting of remaining columns:
 - **From date** - date when report was created (began),
 - **To date** - date when report was finished (ended),
 - **Device name** - it is individual name of device, created by user while system configuration (e.g. freezing chamber)
 - **Description** - this is the description of report type.
- **[Confirm]** button - this button is used to acknowledge alarm states. Acknowledge results in turning off the alarm signal (sound and light) only. To delete device message from the message list, it's cause must be removed (i.e. turn on the fan, fix damaged wires etc.)



If particular alarm has been acknowledged but it's cause has not removed, then new messages, related to this alarm, **do not generate** sound and light signals.

- **“Do not call”** option - is default (after every running of the software) every new report activates **Device Info tab**. If it is necessary, user can switch off automatic activation checking **“Do not call”** option field.

3.3. "REPORTS" MENU

Reports menu is used to view and print reports containing recorded measurement results in the form of tables or graphs. This menu also enables export of measurement data to a text format file.

Creating new reports is possible in two modes:

- for a group (collective report for a maximum of 12 logical devices),
- for a single logical device.



Creating a report for a removed device is possible only in single device mode.

3.3.1. "Table" tab

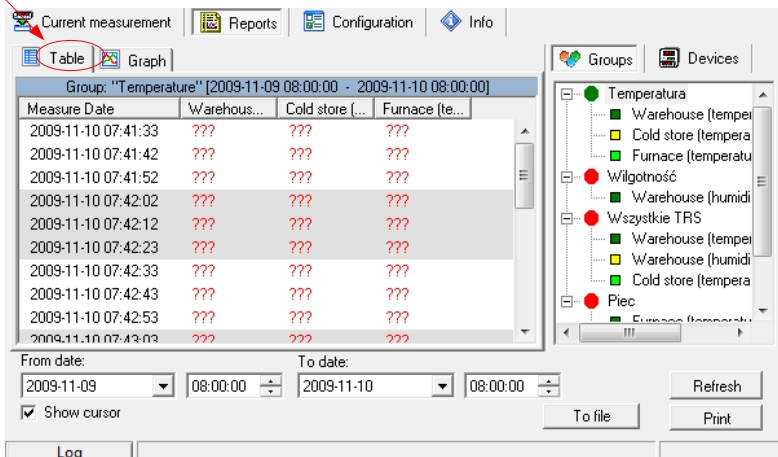


Figure. 3.19. Reports - Table tab

The **Table** tab (Figure. 3.19) is used for printing information concerning recorded measurements (e.g. temperature, humidity) in the form of a table for one of the groups or a particular measurement device selected by the user (for more information on groups see 3.5 section, at page 33). This tab also enables the export of data to text format files. The exported file is formatted in a way allowing the transfer of data to a calculation sheet.

A table consisting of columns containing measurement date and value (for one or a number of devices) is displayed in the centre of the tab. The remaining elements of the **Table** tab are:

- **From date** - this is the date and time defining the beginning of analysed measurement recording period for printing in the form of a table,
- **To date** - this is the date and time defining the end of analysed measurement recording period for printing in the form of a table (this does not have to be the current date),
- **[Print]** button - prints the report,
- **[Refresh]** button - updates the displayed data
- **[To file]** button - exports data to a text file
- **Groups/Devices** - this box enables creating tables in two modes:
 - for a group - collective table for a maximum of 12 measurement devices (observed logical devices can belong to different physical devices),
 - for a single logical device.



Creating groups is described in the **GROUP OPERATIONS** section (page 33).

Selecting table type (for a group or single device)

In order to select table type:

- click appropriate tab **Groups** or **Devices** (Figure. 3.19),
- check specific group or device. This will display measurement results for the selected group or single device (displaying results takes place automatically after each change of group or device).



In order to use table for groups the group must be created first. Creating groups is described in the **GROUP OPERATIONS** section (3.5, page 33).

Change of “From date” or “To date”

Change of **From date** and **To date** date take place the same way as in **Table** tab of **Current measure** menu (see page 16).

3.3.2. "Graph" tab

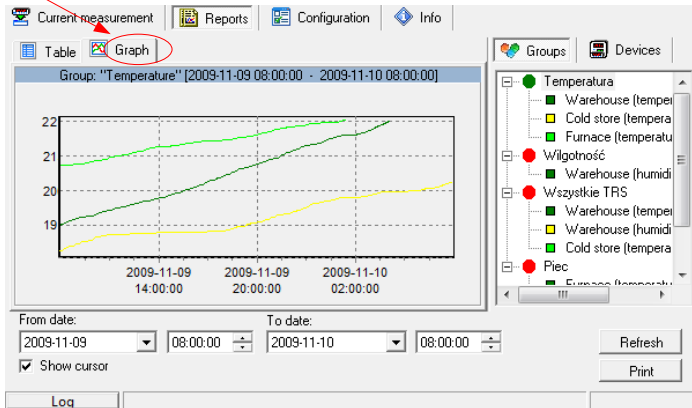


Figure 3.20. Reports - Graph tab

Graph tab (Figure 3.20) is used for viewing and printing of recorded measurement results (e.g. temperature, humidity) in the form of a graph. Meaning of particular tabs and methods of functions service is analogical as for **Table** tab in **Reports** menu.

Measurement points tracking

If **Show cursor** field is checked then special graphical cursor is displayed on the graph. This cursor allows to easy tracking of measured data of selected device. Colour of the cursor is same as selected logical device colour. To change selection click left mouse button until cursor became same colour as desired logical device. Near to the cursor informations about selected point are displayed. Date and time of recording and value of the registered measurement point.



Fig. 3.21. Graph with special tracking cursor

3.4. “CONFIGURATION” MENU

The **Configuration** menu is used to:

- change the settings of devices working in the network (**Devices** tab);
- operations of groups (**Groups** tab);
- operations of alarms (**Alarms** tab).



TERMINAL version of **SimCorder Soft** allows exclusively visualisation of the settings, change of the settings can be made only via **SERVER** version installed on the PC directly connected to network of devices.

3.4.1. “Devices” tab

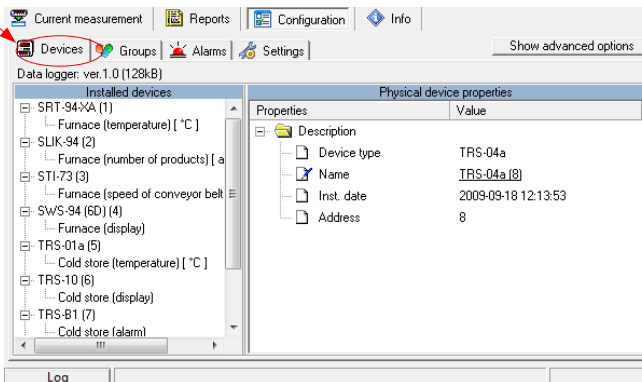


Figure 3.22. Configuration – Devices tab (advanced options hidden)

Changing of devices settings

The settings of devices can be changed by clicking on the **Devices** tab (Figure 3.22). Parameters in this tab can be edited after clicking on **[Show advanced options]** button.

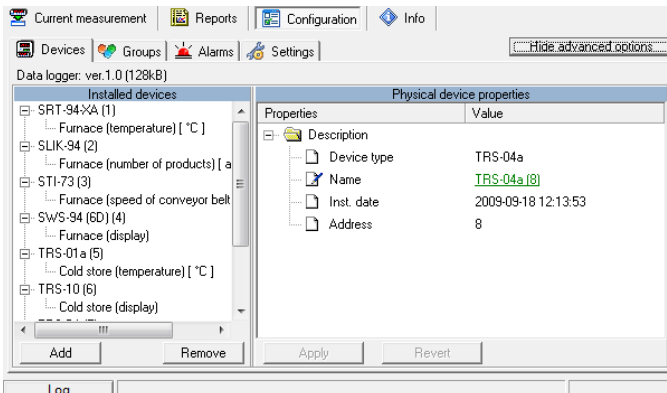


Figure 3.23. Configuration - Devices tab (advanced options active)

The user will be asked to enter a password protecting against the changing of the settings by an unauthorized person. Entering of proper password allows to edit parameters and displaying of additional keys for devices adding / removing (Figure 3.23). Default password is „SimCorder System”.

The **Devices** tab (Figure 3.23) contains such elements (fields) as:

- **Installed devices**
 - shows the tree contains a list of all currently installed devices together with their addresses. The first level of the tree shows physical devices. After clicking the “+” sign next to the physical device name (e.g. SLIK-94) with mouse pointer, the logical devices corresponding to this device are displayed. Logical devices can be divided into three groups: input devices (sensors), output devices (i.e. displays) and alarm devices. For example clicking on SLIK-94, we can see one input device (quadrature counter) showed with name defined while system configuration (i.e. “Furnace (number of products)”). Similarly clicking on device type TRS-04 (temperature and relative humidity sensor) we can see two names defined by user while system configuration – separate name for temperature sensor, and separate for humidity sensor.
- **[Add]** button
 - allow to add new physical devices to the system,
- **[Remove]** button
 - allow to remove installed physical or logical devices (channels) from the system, depending on currently selected device.
- **...device properties**
 - shows the tree containing a list of properties of selected physical or logical device (depending on **Installed devices** selected element). All parameter's values (underlined) can be edited. All changed but not approved (using **[Apply]**) values are showed in bold.
- **[Apply]** and **[Revert]** buttons
 - allow to memorize of changed parameters or revert changed but not approved (using **[Apply]**) parameters.

Physical device means module i.e. SLIK-94. Every physical device consist in at least one logical device.

Logical device - it can be input device (i.e. Temperature sensor), output device (display) or alarm device (i.e. signalling device). It is device servicing single function, and seemed in system as single measurement channel. Physical devices can be build of single logical devices (i.e. SLIK-94), or can be combination of two or more logical devices (i.e. SRD-99).

Parameters of physical and logical devices are changed separately (individually for every type of logical device).

Changes of physical devices configurations.

- 1) To change configuration of selected physical device, in section “**Installed devices**” check selected physical devices on the list (first level of the tree)
- 2) Desired parameters may be changed on the tab “**Physical device properties**” by writing of it's new values, or selection of option from the list.

Followed parameters of Physical devices can be changed (Figure 3.24) :

- device name,
- some of internal registers (depend on device type).

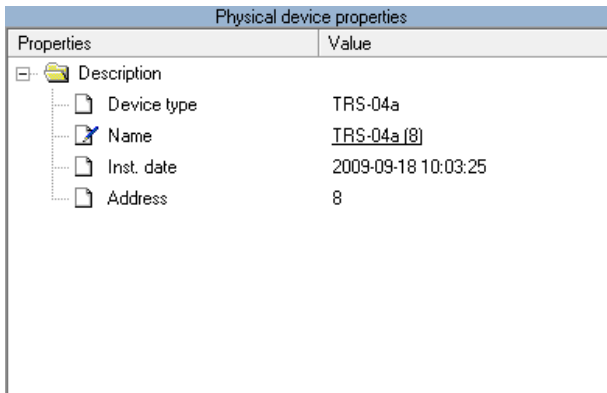


Figure 3.24. Physical device configuration window.

- 3) To confirm changes, click on [Apply] button, to revert changed but not approved (using [Apply]) parameters press [Revert] button.

Changes of logical devices configuration

- 1) To change configuration of selected logical device, in section “**Installed devices**” check selected logical device on the list (second level of the tree),

Depend on device type, properties window will be titled:

- “**Input device properties**” - for input devices
- “**Output device properties**” - for output devices
- “**Alarm device properties**” - for alarm devices

- 2) Desired parameters may be changed on the tab “**...device properties**” by writing of it's new values, or selection of option from list menu.

Followed parameters of input devices can be changed (Figure 3.25) :

- individual name of the device, this name identifies device in the system
- measurement unit
- minimum and maximum values (thresholds). If these values exceeded proper report will appear
- decimal point position - it is possible to express measurement results with resolution higher than one decimal position. This possibility do not meets with temperature and relative humidity measurements (parameter is fixed for these measurements)
- relation between selected *device messages* and previously defined *alarm states* (see: **SIGNALISATION OF SYSTEM ALARM STATES**)



Signalisation of system alarm states is not available in **BASIC** version of **SimCorder Soft** program.

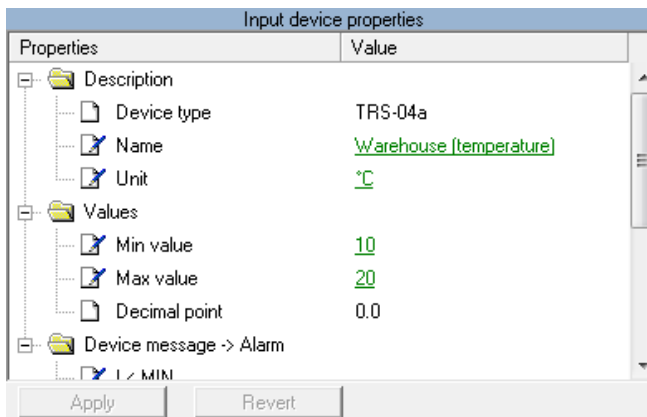


Figure 3.25. “**Input device properties**” window

Followed parameters of output devices can be changed (Figure 3.26) :

- individual name of the device, this name identifies device in the system
- input devices related to selected output device. Results of measurements realised by input device will be send, and presented on selected output device (display).

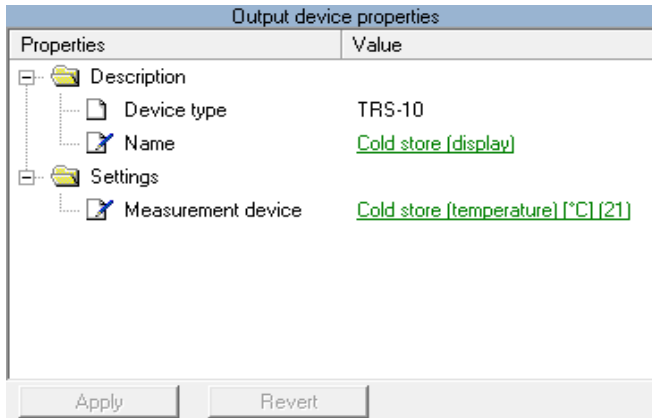


Figure 3.26. “Output device properties” window

Every alarm device (Figure 3.27) has following settings:

- name, identifying device in the system
- reactions (behaviours) of particular alarm device related to previously defined alarm states (see: **SIGNALISATION OF SYSTEM ALARM STATES**)

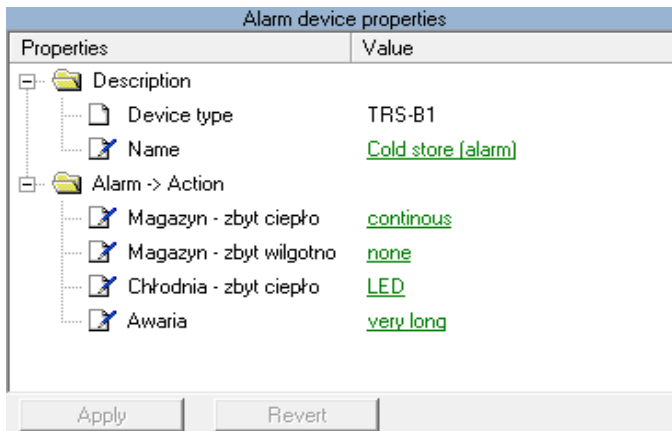


Figure 3.27. “Alarm device properties” window

- 3) To confirm changes, click on **[Apply]** button, to revert changed but not approved (using **[Apply]**) parameters press **[Revert]** button.

3.4.2. "Groups" tab

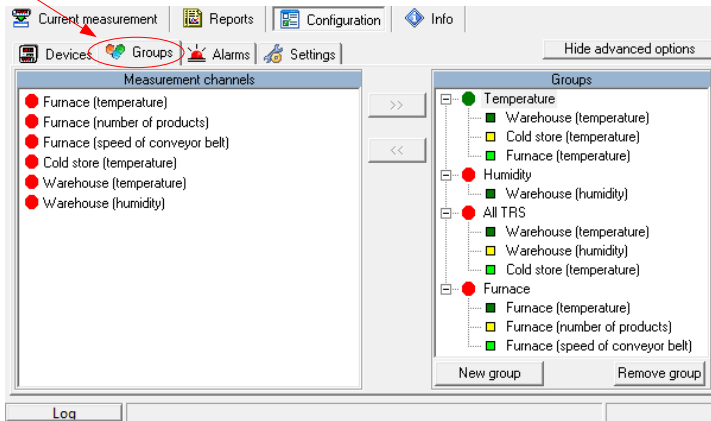


Figure 3.28. Configuration - Groups tab

Groups tab (Figure 3.28) is used to create, modification and delete definitions of devices groups. Defined groups are used in menu **Current measures** and **Reports** for creation of group tables and graphs.



The functions related to the groups are described in **GROUP OPERATIONS** section.

3.4.3. "Alarms" tab

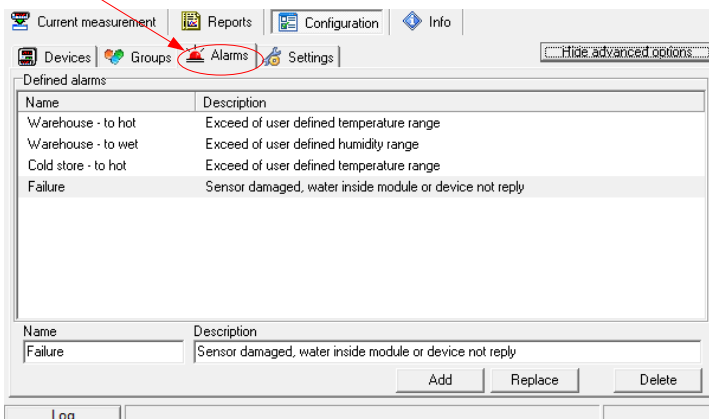


Figure 3.29. Configuration - Alarms tab

Alarms tab (Figure 3.29) allows to define *alarm states*, which can occur in the system. Defined states are being used while configuration of logical devices, and creation of relations between *device messages* and *alarm devices reactions*.



- The method of defined alarm states use is described in **SIGNALISATION OF SYSTEM ALARM STATES**.
- Signalisation of system alarm states is not available in **BASIC** version of **SimCorder Soft** program.

3.4.4. “Settings” tab

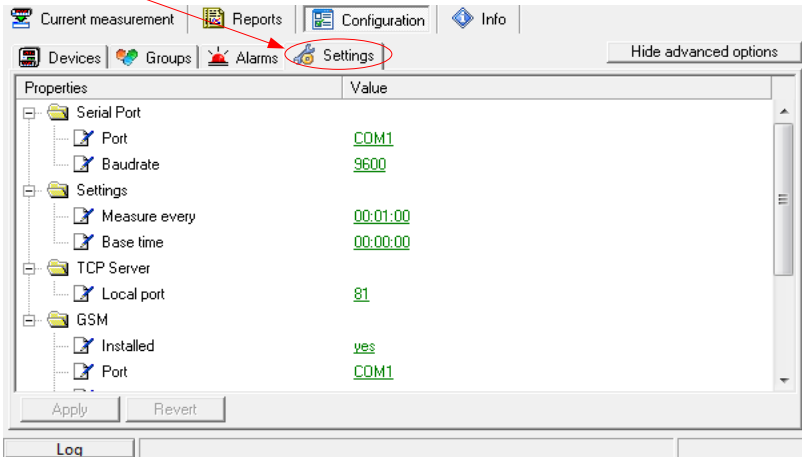


Figure 3.30. Configuration - Settings tab

Settings tab (Figure 3.30) allows to modify main settings of the program:

- Parameters in group **Serial Port** allows to set baud rate and number of serial port which is used to work with network of devices,
- **“Measure every”** parameter defines period between successive data readings from input devices
- **Base time** parameter defines time base point (e.g. 21.00) from which are calculated successive measurement periods defined by **“Measure every”**,
- **Local port** parameter defines TCP port number used for remote access to measurement data.

Parameters of group **GSM** are described in chapter **GSM notification**.

Parameters of group **E-Mail** are described in chapter **E-Mail notification**.

3.5. GROUP OPERATIONS

A **group** enables creating a collective current graph/report for a number of devices, which the user wishes to view on one graph/report. A group consists of a maximum of 12 logical devices.

The functions described in the next part of this manual are available in **Groups** tab of **Configuration** menu.

Typical methods of grouping devices:

- measurement devices of the same physical value (e.g. “Temperature” or “Humidity”),
- devices located in the same places, e.g. “Warehouse”.



One measurement device can belong to different groups.

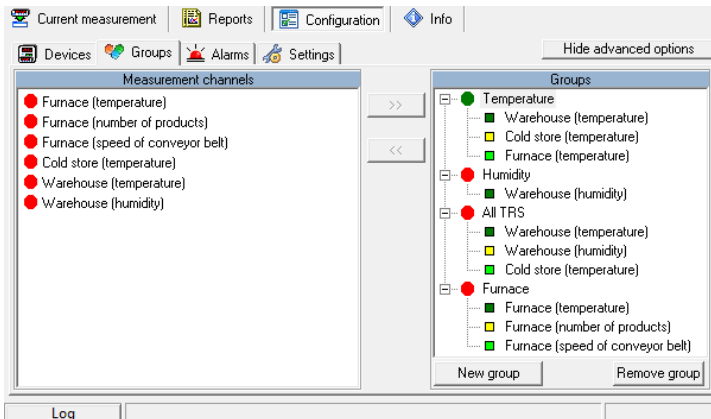


Figure 3.31. Group operations

Creating a new group

In order to create a new group:

- click on the **[New group]** button,
- assign a name to the new group.
- Finish the operation pressing **[ENTER]** or clicking on empty area of the **Groups** list.

Removing a group

In order to remove a group:

- check the desired group on the **Groups** list,
- click on the **[Remove group]** button.

Changing group name

In order to change a group's name:

- check the desired group on the **Groups** list,
- click on the group again,
- the group name will be highlighted - the name can be edited. The edit can be cancelled (restore previous name) by pressing the **[ESC]** key. Upon completing the edit, confirm changes with **[ENTER]** key.

Adding measurement devices to a group

In order to add a measurement device to a group:

- check the group, to which the device is to be added (the checked group is marked with a green circle),
- then check one, or (holding down the **[Ctrl]** key) many devices of **Input devices** list,
- finish the procedure using the **[>>]** button.



A maximum of 12 devices can be added to one group.

Removing a measurement device from a group

To remove a device from a **Group**:

- find the desired group on the **Groups** list,
- show the list of devices in the group using “+” mark,
- check the measurement device to be removed,
- finish the procedure using the **[<<]** button.

3.6. SIGNALISATION OF SYSTEM ALARM STATES

The **SimCorder Soft** application in the **ALARM** and **SERVER** version is equipped in mechanisms allowing to use the signalisation modules TRS-01B in the system. These modules can signalise different states using sound and light signals (especially alarm states generated by input devices).

In basic versions of application (**SimCorder Soft - BASIC**), informations of exceptions and errors are accessible only as text messages (in **Device infos** tab of **Current measures** menu). In the **ALARM** and **SERVER** version of **SimCorder Soft**, every message can occur defined reaction (behaviour) of selected signalisation device.

3.6.1. Defining of alarm states

To define *alarm states* an **Alarms** tab of “**Configuration**” menu is designed. Defining of *alarm states* relies on creation of “list of alarm states” related to selected input devices messages.

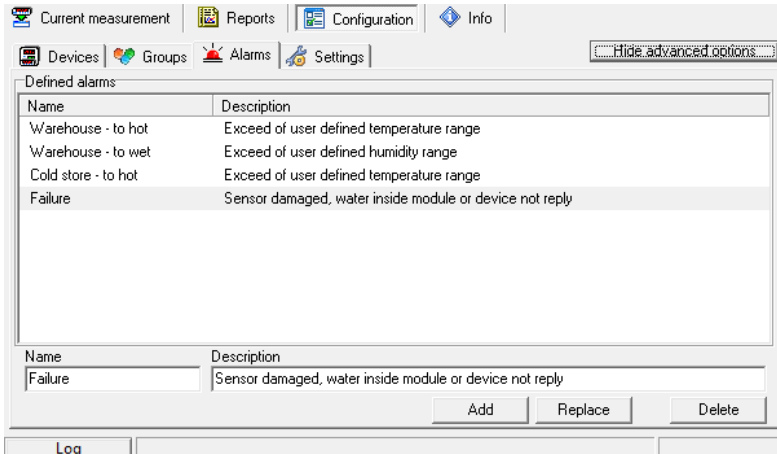


Figure 3.32. Defining alarm states

Addition of alarm state

To add new alarm state to the list:

- create new name and description of the state – in edition windows below alarm list
- click **[Add]** button

Modification of selected alarm state

To modify name or description of previously defined alarm state:

- select (using mouse cursor) state from *Defined alarms* window
- change desired parameter (name or description)
- click **[Replace]** button

Deleting of alarm state

To delete previously defined alarm state from list:

- select (using mouse cursor) state from *Defined alarms* window
- click **[Delete]** button

3.6.2. Defining of relations between device messages and alarm states

To define which of *device messages* should cause appropriate *alarm state*, their relations must be previously defined. This definition can be made in **Devices** tab of **Configuration** menu.

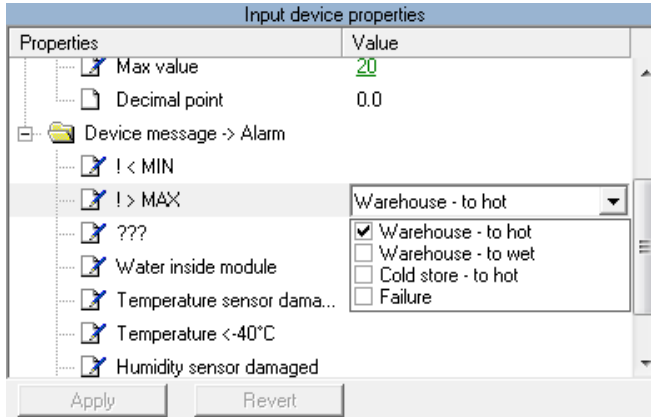


Figure 3.33. Defining of relations between device messages and alarm states

Addition of relation

To add new relation between *device message* and *alarm state*:

- activate “Advanced options” (using [**Show advanced options**] button)
- in section “**Installed devices**” select device from devices list (using mouse cursor)
- go to window “**Input device properties**” and in section “**Device message -> alarm**” select desired *device message*, and one or more *alarm states*
- click [**Apply**] button

Modification or deleting of relations:

To modify or delete relation between device message and *alarm state*:

- In section “**Device message -> alarm**” of “**Input device properties**” select desired *device message* (using mouse cursor),
- change desired check boxes related to alarm states
- click [**Apply**] button



Relations should be defined for all device messages, of selected input devices, which has to be signalled by available alarm devices.

3.6.3. Defining of relations between alarm states and alarm devices

To define which of alarm devices (available in the system) has to react to particular alarm states, proper relations must be defined. It is possible to define behaviours of particular signalisation module to every alarm state. All these definitions can be made in **Devices** tab of **Configuration** menu.

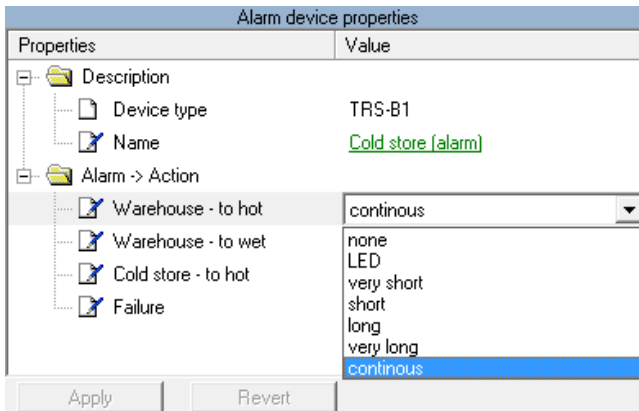


Figure 3.34. Defining of relations between alarm states and alarm devices

Addition or modification of relation:

To make new relation:

- activate “Advanced options” (using [**Show advanced options**] button),
- in section “**Installed devices**” select *alarm device* from *Installed devices* list (using mouse cursor)
- go to “**Alarm device properties**” window and in section “**Alarm - Action**” select desired *alarm state* and reaction from drop down lists
- click [**Apply**] button



Individual *alarm device* can react on different *alarm states* related to the same or different behaviours of the alarm device. If few *alarm states* occur simultaneously (and every of them is related to one device) highest priority has *alarm state* related to behaviour with longest sound signals.

Deletion of relation:

To delete relation:

- go to “**Alarm device properties**” window and in section “**Alarm - Action**” select “**none**” option from drop down list
- click [**Apply**] button

3.6.4. Example configuration of alarm states signalisations

Example configuration is showed on Figure 3.35. Messages “a” and “c” of devices no. 1 and 2 causes the same reaction of *alarm device* in Warehouse, informing about occurrence of some situations. Most of messages additionally is being signalised in Control Room, using the same reaction of one *alarm device*. Message “d” of input device no. 2 (e.g. situations which needs quick operator reaction) has been distinguished with different behaviour of *alarm device(s)*. Messages “k”, “l”, “m” of input device no. 3 cause the same alarm state (it can be situations with the same meaning/priority).

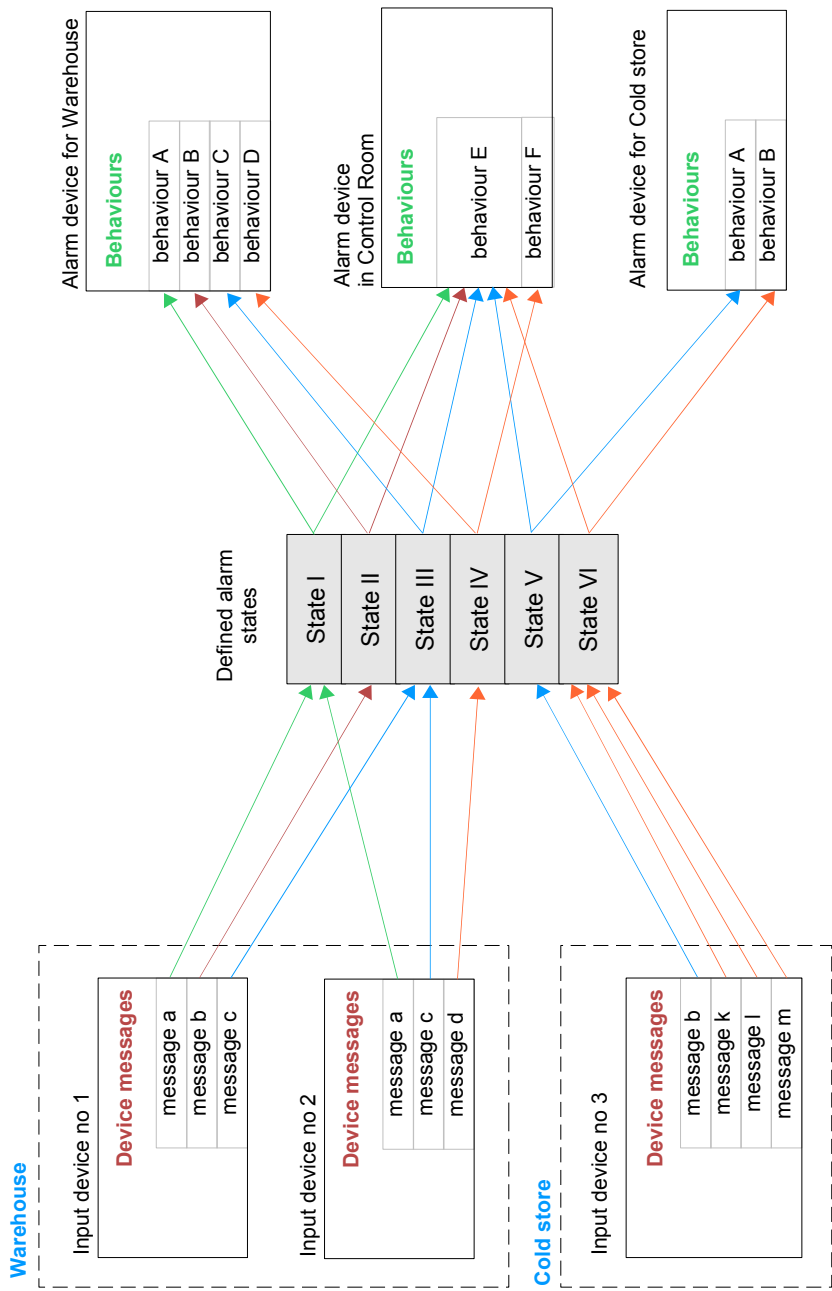


Figure 3.35. Example configuration of alarm states signalisations

3.7. “semiSCADA” MODULE

SimCorder Soft is equipped with a **semiSCADA** module, which enables you to present current measurements in a clear graphical way. We are here various indicators and objects that can be placed on the plan and show it in this way the real appearance of the room being monitored. You can also observe measurements at different levels of the process or system.

3.7.1. Description of semiSCADA interface

The **semiSCADA** module is divided into three areas (Figure 3.36):

1. **area of logical devices** - list of source devices for indicators. This list is visible when showing advanced options mode is active.
2. **area of toolbar** - there is a toolbar that supports visualization. A detailed description can be found in **TOOLBAR** section.
3. **area of visualization** - a place where there are all visualization graphics elements

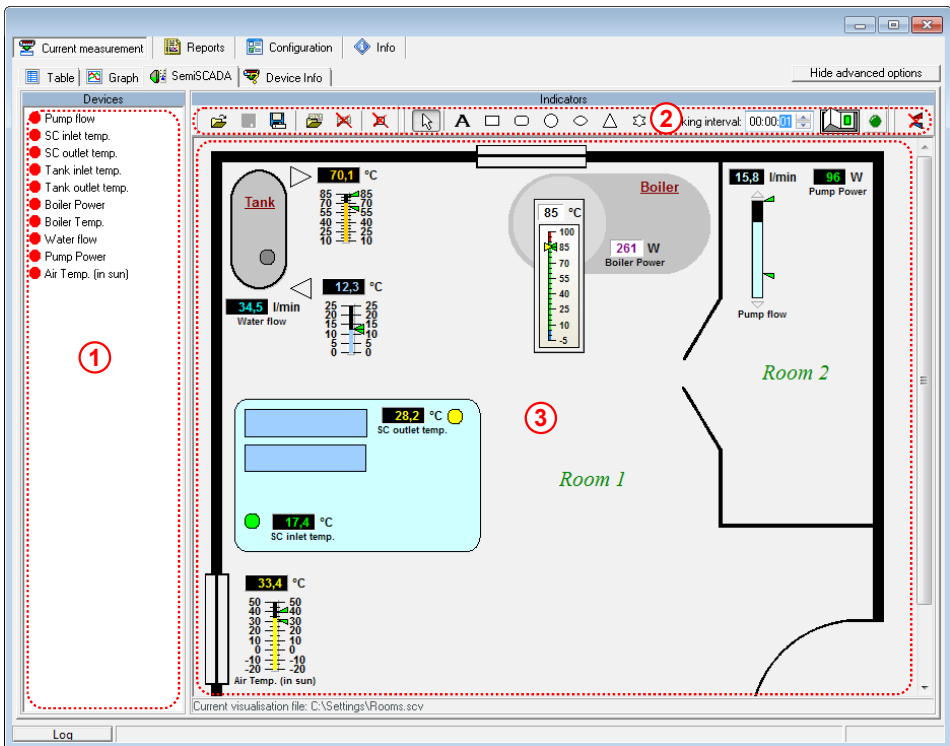


Figure 3.36. Areas of **semiSCADA** module

TOOLBAR

In showing advanced options mode, the toolbar looks like on Figure 3.37.

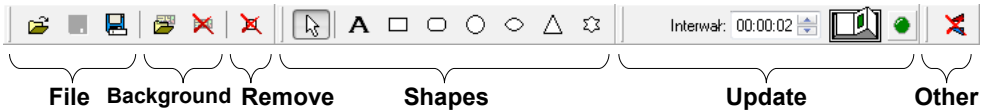



Figure 3.37. The **semiSCADA** toolbar in showing advanced options mode

The toolbar has the following sections:

- **File** - there are commands for opening ([Open...]) and saving ([Save] and [Save As...]) **semiSCADA** configuration file of *.scv type. Last saved configuration is set as current configuration. This means that it will be automatically opened during each program starting.
- **Background** - commands in this section responsible for background graphic that can be assigned to the current visualization. The background image should be previously prepared using any bitmap editor in one of the following file formats: *.png, *.bmp, *.jpg, *.jpeg, *.wmf, *.emf. In this section you can also remove the background assignment.



Files of *.bmp type allows you to set the selected colour as transparent. Colour, which is recognized as transparent is defined by the lower left pixel of prepared background image. Better solution is to prepare a background as a *.png file (32 - bit), which contains additional transparency alpha channel. In this case the level of transparency can be freely set by graphic designer in the selected areas of image.
- **Remove** - this section contains a button that provide removing all objects (indicators and shapes) from area of visualization.
- **Shapes** - by selecting any command in this section, you specify the shape that will be placed to the area of visualization. Shapes can be used to insert additional descriptions of indicators and measurement sections or to selection of other elements in visualization area without modify the background image.
- **Update** – in this section you can set the frequency of querying devices for **semiSCADA** purpose. This setting does not specify the frequency of writing measures to the database, which you can specify in “Configuration” > “Settings” > “Measure every”.
- **Other** - this section contains additional commands, which are also available in the stealth advanced options mode for operate visualization at working time. By clicking [Reset MIN / MAX] you will set the mark minimum and maximum value in the position corresponding to the current value of the measurement.

3.7.2. Opening a configuration

When you click on the **semiSCADA** tab first time, visualization is not configured yet, so you will see an empty area without indicators (Figure 3.38).

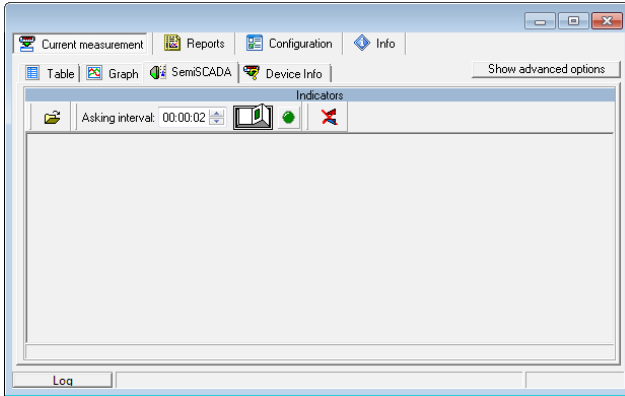


Figure 3.38. Not configured SemiSCADA tab

In this situation, the user can load previously configured and saved settings of visualisation by clicking on the “Open” button in the toolbar and selecting file of *. scv type. If you don't have a file with predefined visualization settings of *semiSCADA* module, you can create one.

3.7.3. Creating a new configuration

Editing objects in the visualisation area is possible only when showing advanced options mode is active. Switching between showing and stealth advanced options mode is done by clicking the button [Show / Hide advanced options].

ASSIGNING A BACKGROUND IMAGE

By selecting [Open background image...] from the **Background** section of the toolbar, you can specify what background graphic will be assigned to the current visualization. There is no need to assign the background, but it facilitates location of meters and increase the visibility of entire visualization.

ADDING INDICATORS

The next step is to add indicators to the area of visualization. Each indicator is a graphical value representation of a measurement channel (logical device). The list of logical devices which value can be monitored is located on the left side of *semiSCADA* tab. It is possible to monitor input devices only, except of removed which are available for historical purposes only in the **Reports** tab.

To create an indicator corresponding to the particular channel, select a channel from the list of available devices, and then drag it into the area of visualization (Figure 3.39).

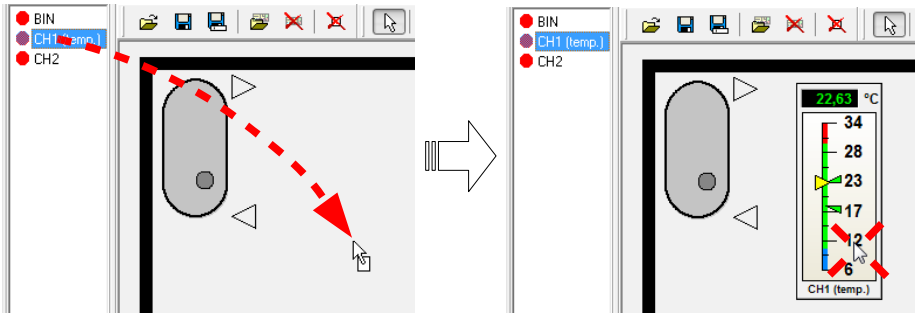


Figure 3.39. Creation of a new indicator in the area of visualization

If you want to change the assignment, simply re-drag new logical device on an existing indicator. In this way you can quickly change the data source for the indicator, without changing its appearance.

By opening the context menu of any indicator, will be show associated commands with it. There is the possibility to choose type of indicator (submenu “**Type**”). You can also set their orientation (submenu “**Orientation**”) and customize appearance (command “**Settings ...**”).

3.7.4. Indicators

Below are presented different types of indicators with a description of their settings.

VERTICAL METERS

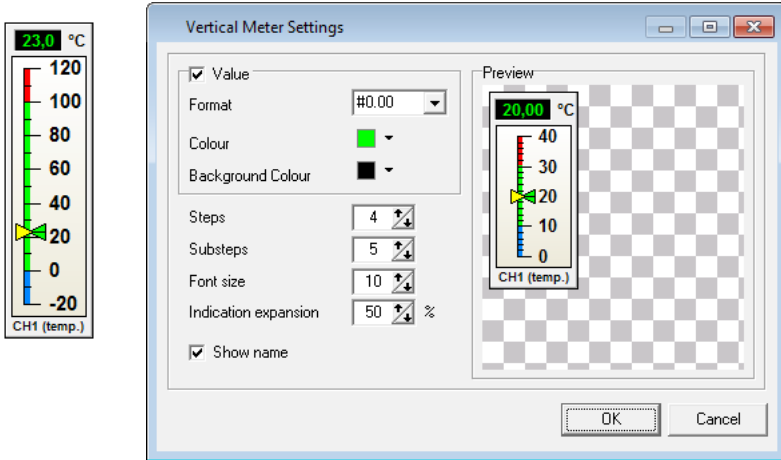


Figure 3.40. Example of a vertical meter with the appearance settings window

Settings of Vertical Meter type indicator (Figure 3.40) are as follows:

- **Value** - activate this option enables showing measurement as a number;
 - **Format** - specifies how to display measured values. The sign “#” reserves space for a digit and displays this digit if it is different from 0. The character “0” is used to force display digit in selected position, including the digit 0;
 - **Colour** - specifies colour of numerical value;
 - **Background Colour** - specifies the background colour of numerical value;
- **Steps** - specifies the number of main sections into which the indicator will be divided. Each step is marked by a numerical value;
- **Substeps** - specifies the number of subsections into which the main section will be divided. Substeps are not marked by a numerical value;
- **Font size** - defines the font size in pixels, which will be used in labels of steps;
- **Indication expansion** - specifies the percentage extension of the indication area, below and above of alarm trigger limits sets in the tab: **“Settings”** > **“Devices”** in the parameters of the channel **“Min value”** and **“Max value”**;
- **Show name** - activate this option enables showing logical device name assigned to the current indicator;

HORIZONTAL METERS

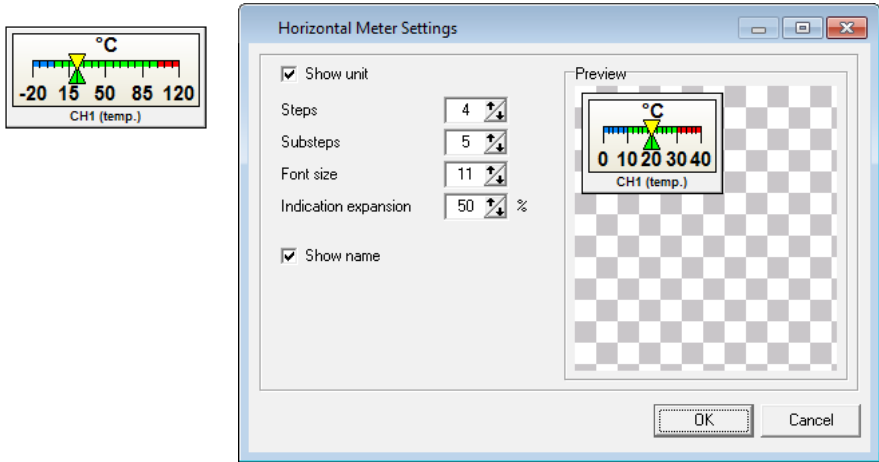


Figure 3.41. Example of a horizontal meter with the appearance settings window

Settings of Horizontal Meter type indicator (Figure 3.41) are as follows:

- **Show unit** - activate this option enables showing unit of measurement;
- **Steps** - specifies the number of main sections into which the indicator will be divided. Each step is marked by a numerical value;
- **Substeps** - specifies the number of subsections into which the main section will be divided. Substeps are not marked by a numerical value;
- **Font size** - defines the font size in pixels, which will be used in labels of steps;
- **Indication expansion** - specifies the percentage extension of the indication area, below and above of alarm trigger limits sets in the tab: "**Settings**" > "**Devices**" in the parameters of the channel "**Min value**" and "**Max value**";
- **Show name** - activate this option enables showing logical device name assigned to the current indicator;

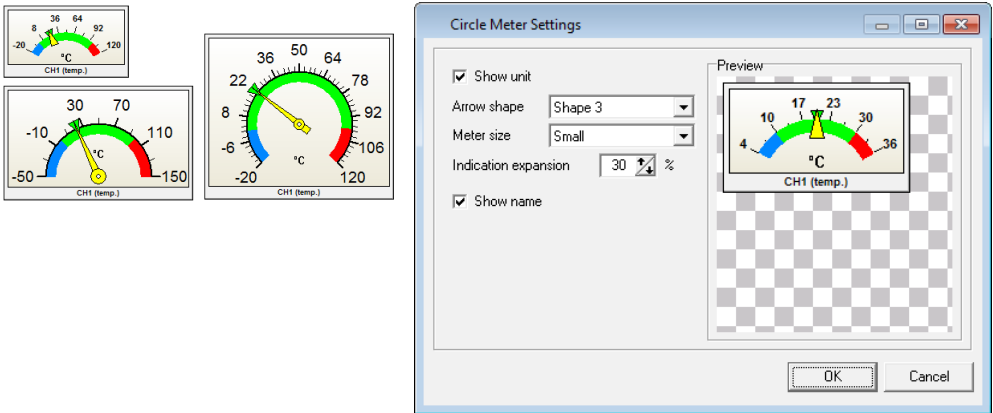
CIRCLE METERS

Figure 3.42. Examples of a circle meters with the appearance settings window

Settings of Circle Meter type indicator (Figure 3.42) are as follows:

- **Show unit** - activate this option enables showing unit of measurement;
- **Arrow shape** - specifies shape of the meter arrow;
- **Meter size** - specifies one from the predefined meter sizes;
- **Indication expansion** - specifies the percentage extension of the indication area, below and above of alarm trigger limits sets in the tab: “**Settings**” > “**Devices**” in the parameters of the channel “**Min value**” and “**Max value**”;
- **Show name** - activate this option enables showing logical device name assigned to the current indicator;

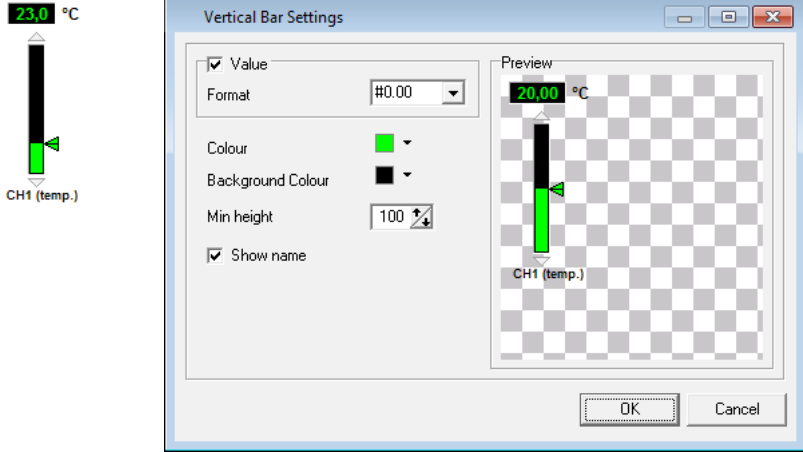
VERTICAL BARS

Figure 3.43. Example of a vertical bar with the appearance settings window

Settings of Vertical Bar type indicator (Figure 3.43) are as follows:

- **Value** - activate this option enables showing measurement as a number;
 - **Format** - specifies how to display measured values. The sign “#” reserves space for a digit and displays this digit if it is different from 0. The character “0” is used to force display digit in selected position, including the digit 0;
- **Colour** - specifies colour of numerical value and active part of the bar;
- **Background Colour** - specifies the background colour of numerical value and background colour of the bar;
- **Min height** - sets the minimum height of bar in pixels. This value ensures that regardless of any other display settings, height of the bar will never be less than this value;
- **Show name** - activate this option enables showing logical device name assigned to the current indicator;

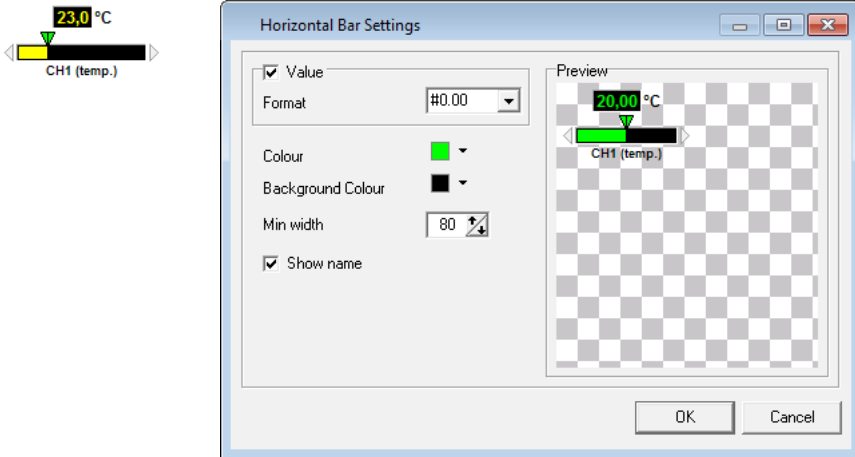
HORIZONTAL BARS

Figure 3.44. Example of a horizontal bar with the appearance settings window

Settings of Horizontal Bar type indicator (Figure 3.44) are as follows:

- **Value** - activate this option enables showing measurement as a number;
 - **Format** - specifies how to display measured values. The sign “#” reserves space for a digit and displays this digit if it is different from 0. The character “0” is used to force display digit in selected position, including the digit 0;
- **Colour** - specifies colour of numerical value and active part of the bar;
- **Background Colour** - specifies the background colour of numerical value and background colour of the bar;
- **Min width** - sets the minimum width of bar in pixels. This value ensures that regardless of any other display settings, width of the bar will never be less than this value;
- **Show name** - activate this option enables showing logical device name assigned to the current indicator;

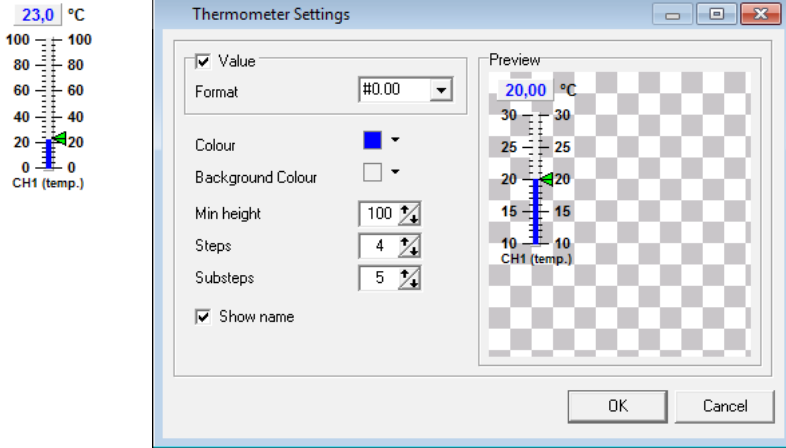
THERMOMETERS

Figure 3.45. Example of a thermometer with the appearance settings window

Settings of Thermometer type indicator(Figure 3.45) are as follows:

- **Value** - activate this option enables showing measurement as a number;
 - **Format** - specifies how to display measured values. The sign “#” reserves space for a digit and displays this digit if it is different from 0. The character “0” is used to force display digit in selected position, including the digit 0;
- **Colour** - specifies colour of numerical value and colour of mercury in the thermometer;
- **Background Colour** - specifies the background colour of numerical value and background colour of mercury bar;
- **Min height** - sets the minimum height of the thermometer bar in pixels. This value ensures that regardless of any other display settings, height of the thermometer bar will never be less than this value;
- **Steps** - specifies the number of main sections into which the thermometer will be divided. Each step is marked by a numerical value;
- **Substeps** - specifies the number of subsections into which the main section will be divided. Substeps are not marked by a numerical value;
- **Show name** - activate this option enables showing logical device name assigned to the current indicator;

TANKS

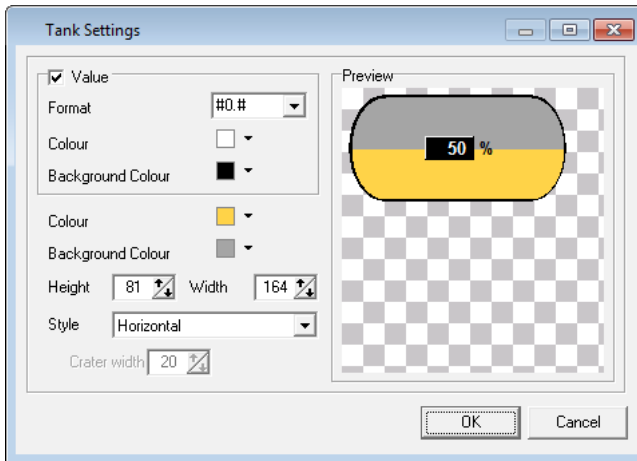
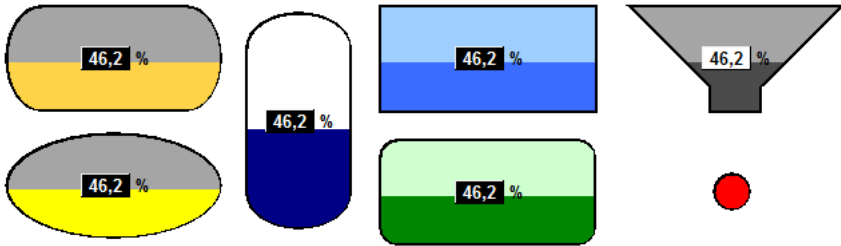


Figure 3.46. Examples of tanks with the appearance settings window

Settings of Tank type indicator(Figure 3.46) are as follows:

- **Value** - activate this option enables showing measurement as a number;
 - **Format** - specifies how to display measured values. The sign “#” reserves space for a digit and displays this digit if it is different from 0. The character “0” is used to force display digit in selected position, including the digit 0;
 - **Colour** - specifies colour of numerical value;
 - **Background Colour** - specifies the background colour of numerical value;
- **Colour** - specifies colour of active part of the tank;
- **Background Colour** - specifies the background colour of the tank;
- **Height** - specifies height of the tank in pixels;
- **Width** - specifies width of the tank in pixels;
- **Style** - specifies type of the tank, which affects its shape. You can choose a style: horizontal, vertical, rectangle, rounded rectangle, ellipse and crater;
- **Crater width** - if style is chosen as a crater, this parameter specifies in pixels bottom width of this crater;

VALUE INDICATORS

23.0 °C
CH1 (temp.)

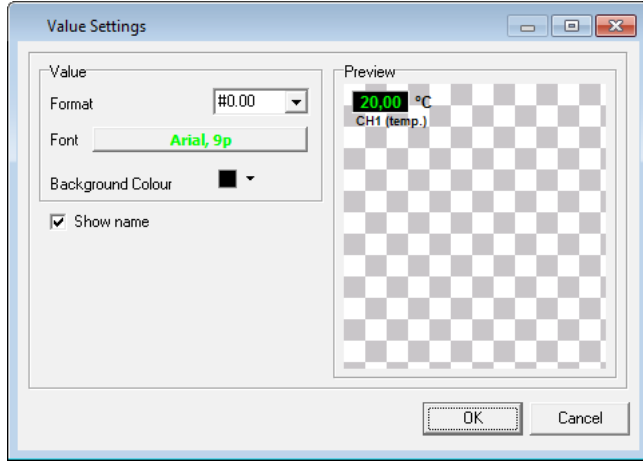


Figure 3.47. Example of a value indicator with the appearance settings window

Settings of Value type indicator (Figure 3.47) are as follows:

- **Format** - specifies how to display measured values. The sign “#” reserves space for a digit and displays this digit if it is different from 0. The character “0” is used to force display digit in selected position, including the digit 0;
- **Font** - this button gives you a choice of fonts for displaying the measured values;
- **Background Colour** - specifies the background colour of numerical value;
- **Show name** - activate this option enables showing logical device name assigned to the current indicator;

3.7.5. Shapes and descriptions

In the area of visualization, in addition to active indicators, you can place graphical elements in the form of text labels and shapes. Labels can be used to insert additional descriptions of indicators and measurement sections, shapes to determine regions of the plan and highlight other important elements of visualization area without modify the background image.

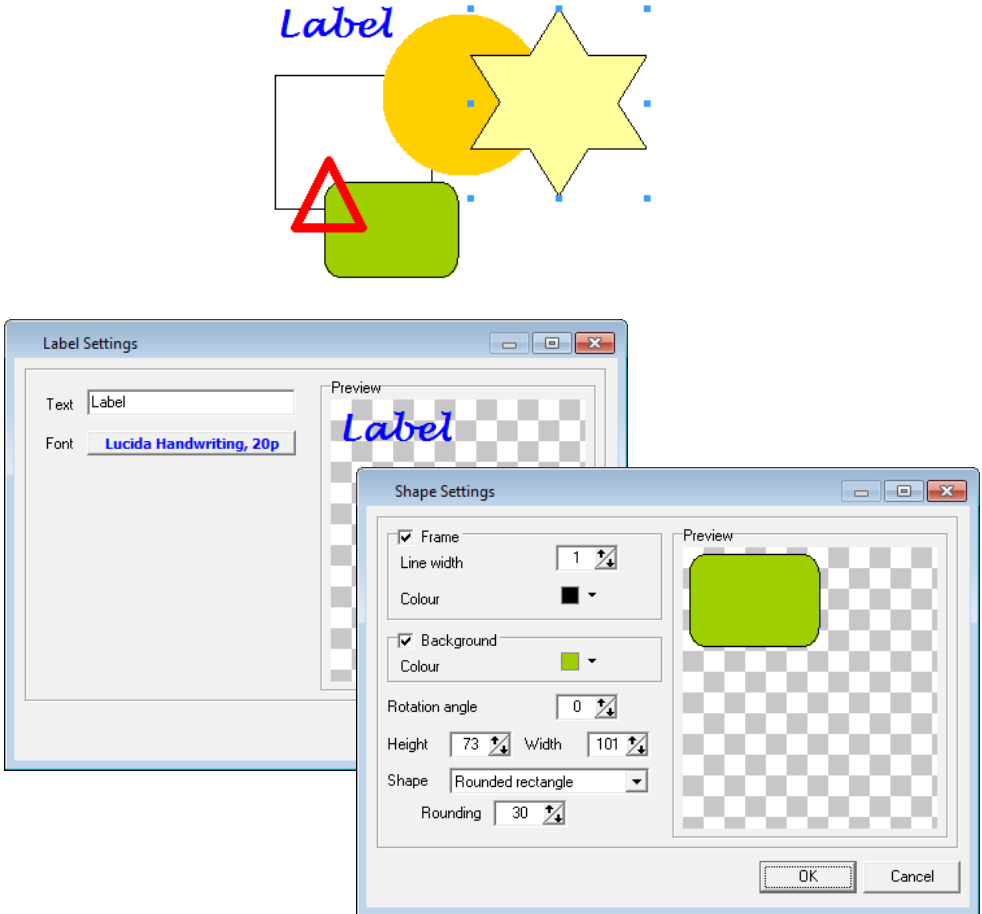


Figure 3.48. Examples of labels and shapes with the appearance settings window

Settings of labels (Figure 3.48) are as follows:

- **Text** - specifies the text, which will be assigned to the label;
- **Font** - this button gives you a choice of fonts for displaying the label;



If in the system is installed font such as “Windings” or “Webdings” (by default in every version of Windows starting from 3.1x), you can specify additional shapes contained in these fonts, which are unavailable using of basic shapes . For example, if you want to insert a blue water droplet “●” into visualization area, with a height of 100 pixels, you must enter the settings for the label, click on the **[Font]** button, select the font named “Windings” with a size of 100, set the font colour to Blue, and enter the letter “S” as a **Text**.

Settings of shapes (Figure 3.48) are as follows:

- **Frame** - activate this option enables showing line around the selected shape;
 - **Line Width** - specifies in pixels the line thickness of the frame;
 - **Colour** - specifies colour of the frame;
- **Background** - activate this option cause fill out the shape of selected colour;
 - **Colour** - specifies colour to fill out the shape;
- **Rotation angle** - specifies the angle from 0° to 360° which determine how to rotate the shape in clockwise direction;
- **Height** - specifies height of the shape in pixels;
- **Width** - specifies width of the shape in pixels;
- **Shape** - specifies shape of an object;
- **Rounding** - specifies rounding size of corners for a shape “Rounded Rectangle”;

3.7.6. Examples of configuration

ASSUMPTIONS

As an example of using *semiSCADA* module can be an electric water heating system with additional heating using a solar collector. In warm countries, where the air temperature in most exceeds 30 °C, you can use a system that will be able to effectively use the heat supplied by the sun. Saving electricity in that system is greater, when you use more water during a day.

The system consists of three types of sensors: temperature (1), flow (2) and power (3). Locations of measurement points in the system are shown in Figure 3.49.

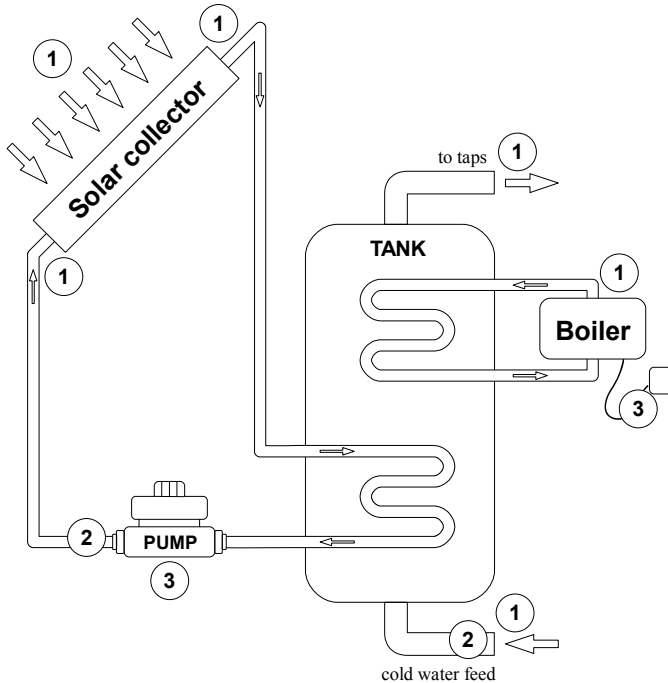


Figure 3.49. Map of monitored physical quantities in water heating system

REALIZATION

To create visualization in *semiSCADA* module, which will meet the above assumptions, should be prepared background image and assign it by toolbar ([Open background]) to current visualization. Then describe the visualisation by inserting labels and shapes to the right places.

After that, the area of visualization is prepared to insert indicators corresponding to logical devices, which were previously properly configured and described. Appearance of any added indicator should be adjusted to context of the displayed value. Finally, save the configuration as a *.scv file giving it name consistent with what it represents, for example, "Power_and_solar_heating.scv".

Result which you achieve, is quite clear visualization of system elements states similar to that shown in Figure 3.50.

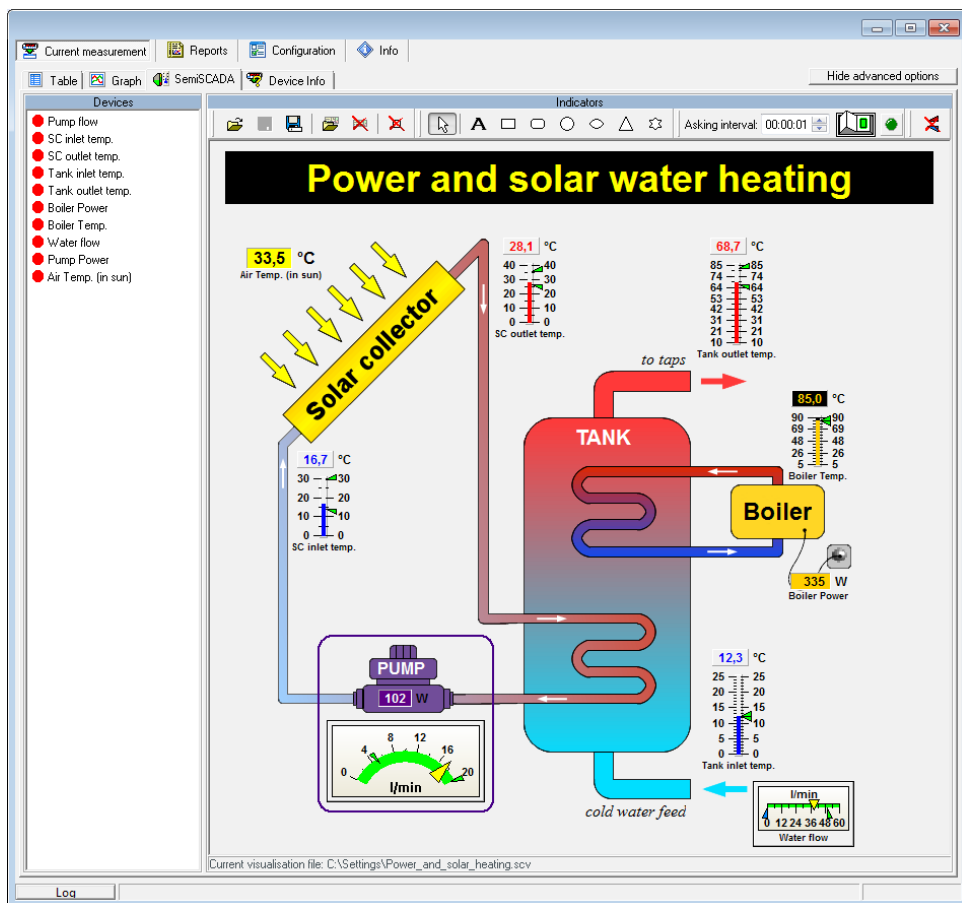


Figure 3.50. Example of visualization created in semiSCADA

The presentation of current measurements for the example above is not necessarily confined to a single visualization. You can create a completely separate configuration of *semiSCADA* visualization, which will be clear divided into circuits with different thermal-energy source and the target usable water circuit. Visualization of this can be done completely in the program, without preparation of background graphics (Figure 3.51).

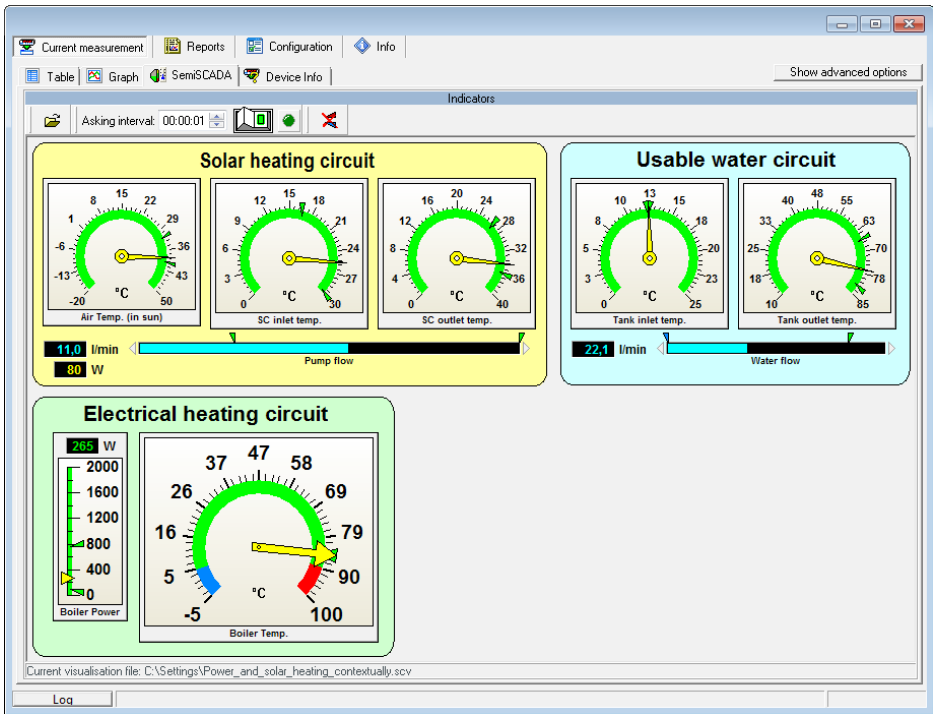


Figure 3.51. Example of visualization divided into heating circuits

If user has created several different *semiSCADA* visualizations that relate to the same logical devices, their configurations may be opened from the toolbar at any time without switching to the showing advanced options mode. Last opened or saved configuration of visualization is remembered and will always be loaded at startup.

3.8. ALARM NOTIFICATIONS

The **SimCorder Soft** application in the **ALARM** and **SERVER** version has new functions, which allow sending messages via GSM network.



In basic versions of application (**SimCorder Soft - BASIC**), informations of exceptions and errors are accessible only as text messages (in **Device infos** tab of **Current measures** menu). GSM notification is not available in **BASIC** version.



Notifications work only if you run a program when communication with the devices network has been initialized properly.

3.8.1. GSM notification

All messages can be sent to previously defined telephone numbers. To activate GSM messaging function, connect GSM modem to selected serial port (of PC) and set its parameters using **Settings** tab of **Configuration** menu (Figure 3.52):

- **Installed** option must be set as “yes”,
- **Port** parameter sets serial port number (name) which GSM modem is connected to.
- **Baud rate** parameter sets speed of the modem,
- **PIN** parameter defines PIN number of SIM card installed into modem
- **GSM number** (from 1 to 5) defines telephone numbers the messages will be sent to.

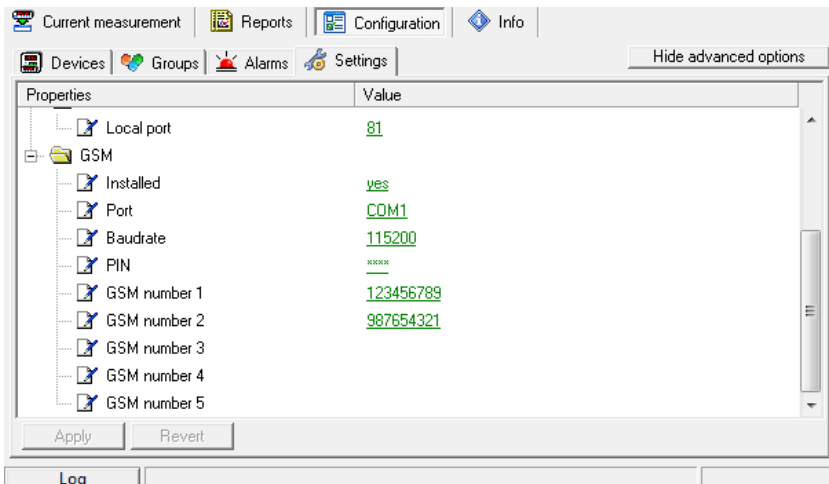


Figure 3.52. Example of GSM modem settings

3.8.2. E-Mail notification

All messages can be sent to selected destination addresses. To activate the notification via e-mail, you must set the parameters for your SMTP server through which messages are sent and the recipients addresses using **Settings** tab of **Configuration** menu (Figure 3.53):

- **Send e-mails** option must be set as “yes”
- **SMTP Server** parameter specifies the domain name of the sender's account
- **SMTP Port** parameter specifies the port on which running the server service
- **Use SSL** option determines whether the connection to the server to be encrypted using SSL v2.0 or SSL v3.0. TLS encryption is not available.
- **SMTP Username** parameter specifies the name of your account on the SMTP server. This is usually the first part of your e-mail.
- **SMTP Password** parameter specifies the password for your account on the SMTP server
- **Sender Address** parameter specifies the address of the sender appears at the recipients message. This address must exist on the SMTP server, because often it is verified.
- **Recipients** parameter specifies the list of recipients to sent notifications. Each recipient address must be separated by semicolon “;”.
- **Strip accents** option is used to convert the content of messages to the format where all accented latin characters are converted to their equivalents without the accent, for example: “ä” to “a”, “ë” to “e”, “ł” to “L”, etc. This avoids problems with the correct displaying message by some readers.

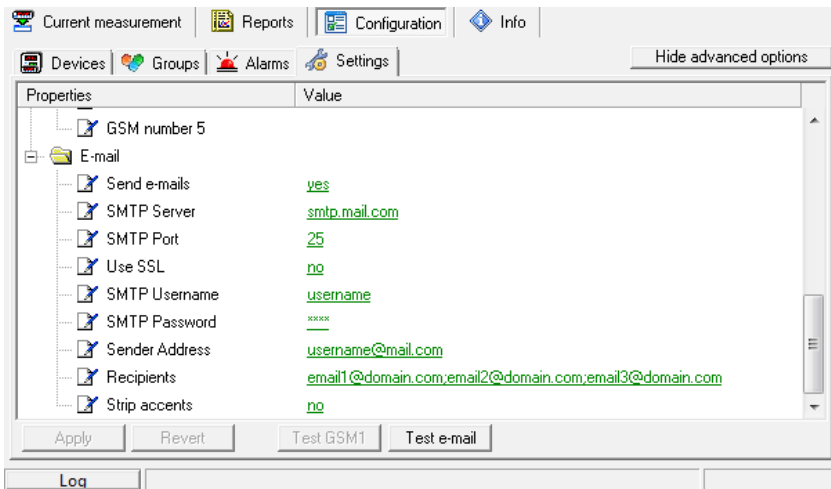


Figure 3.53. Example of settings for sending e-mails

After entering the proper settings, you can test working notifications by clicking [Test e-mail] button.

3.9. APPLICATION CLOSING

Closing of the application causes stopping of measurements by **SimCorder Soft**. If SRS data logger and TRS type modules are present in the system, then SRS data logger intercepts functions of measurement and data registration (from TRS type modules only). All measurements made by data logger will be transferred to the **SimCorder Soft** while application starts again. Maximum time of data recording is showed in message window (Figure 3.54).



TERMINAL version of **SimCorder Soft** can not cooperate with SRS data logger directly.

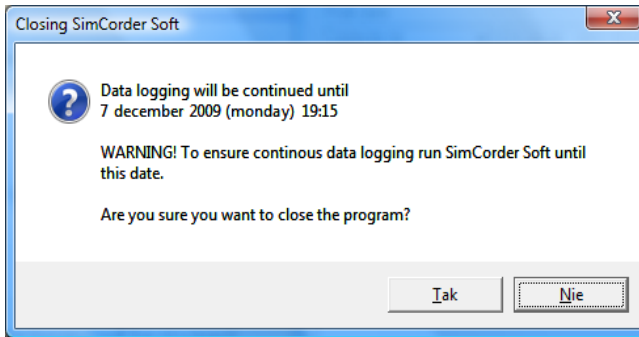


Figure 3.54. Message window informs user about maximum time of data recording (it is relates to systems equipped in data logger).

If system is not equipped with SRS data logger then other window will appear when application is being closed. (Figure 3.55).

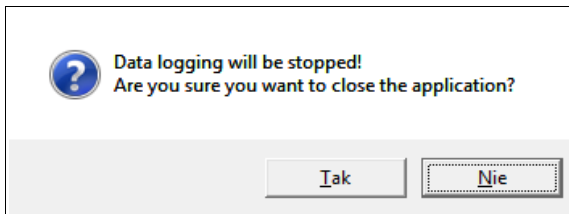


Figure 3.55. Message window informs user about stopping of data recording (it is related to systems without data logger).



Before operation of data reading (from SRS data logger) is being finished, it is impossible to close application (software displays warning window), but while data reading is stopped by user (e.g. power off, or abnormal program termination) then data logger will not restarts data registration. In such case all measurements since abnormal program termination to next application run will be lost. To be sure of data recording continuation proper application termination should be done.

3.10. LIST OF ERRORS AND FAULT DIAGNOSTICS

<i>Symptom</i>	<i>Cause</i>	<i>Action</i>
All points are a red colour and a question mark (?) is displayed instead of current values	converter fault or one of converter's connections is broken	<ul style="list-style-type: none"> • check converter power supply • check connection of transmission line with converter • check correct operation of computer's serial port (e.g. by connecting mouse to the port supporting the converter)
Some points are a red colour (and question marks are displayed instead of current values)	Transmission line fault	<ul style="list-style-type: none"> • check connections on the first transducer that "does not reply" • check continuity of transmission line from the place where the lack of communications occurred
One of the points is a red colour (and question mark is displayed instead of current value)	Transducer fault	<ul style="list-style-type: none"> • check transducer connections • if the control LED flashes at high rate, then the transducer has a faulty sensor.



*designed for
Windows*

System requirements:

At least i486 computer,
Windows® 98 or newer,
Colour monitor with minimum resolution of 800 x 600,
50 MB of free hard drive space.